

M10 WEDGE NUT



Designed for ComFlor® 60, 80 and SR Profiles

APPLICATION

For the installation of service hangers in ComFlor® 60, ComFlor® 80 and ComFlor® SR profiles.

ADVANTAGES

Efficient Installation – Use of the M10 Wedge Nut eliminates the need for any drilling, reducing installation time.

Easy Onsite Adjustment – Allowing the contractor to retrofit services, without the requirement for further penetrations.

TESTING

Tested by an independent approved laboratory.

TECHNICAL DATA

Working Load: 2.8kN (Gravity Load)

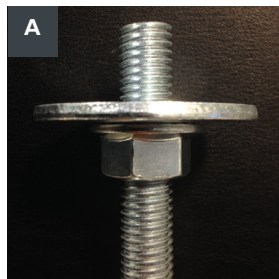
Material: 1214/1215 Bright Mild Steel

Finish: Rumble Finish & Zinc Plated

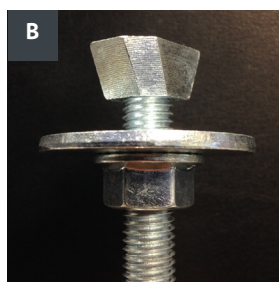
Product Code: for ComFlor® 80: P0008782
for ComFlor® 60: P0008785
for ComFlor® SR: P0005399

INSTALLATION

1
Thread the flange nut and washer on to the fixing end of the threaded rod assembly as shown in Fig A.



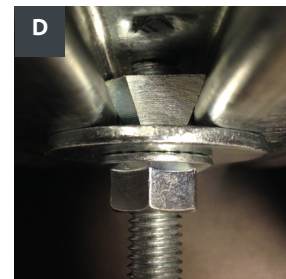
2
Thread the M10 Wedge Nut onto the fixing end of the threaded rod until the rod meets the reverse side of the Wedge Nut as shown in Fig B.



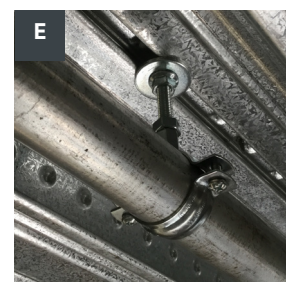
3
Insert the Wedge Nut into the dovetail of the ComFlor® profile as shown in Fig C.



4
Begin threading the rod through the Wedge Nut until the rod meets the top of the dove tail forcing the Wedge Nut to twist and lock into position.



5
Once the Wedge Nut is firmly secured, thread the flange nut and washer towards the underside of the ComFlor® profile to lock the fixing in place as shown in Fig D.



6
Installation is complete, Fig E.

Note:

The finished install must contain a M10 x 40 mm x 3.0mm round washer (P0050925) and M10 serrated flange nut (P0008784) in order to comply with the tested installed method.

Each ComFlor® wedgnut must be used in the corresponding ComFlor® profile.