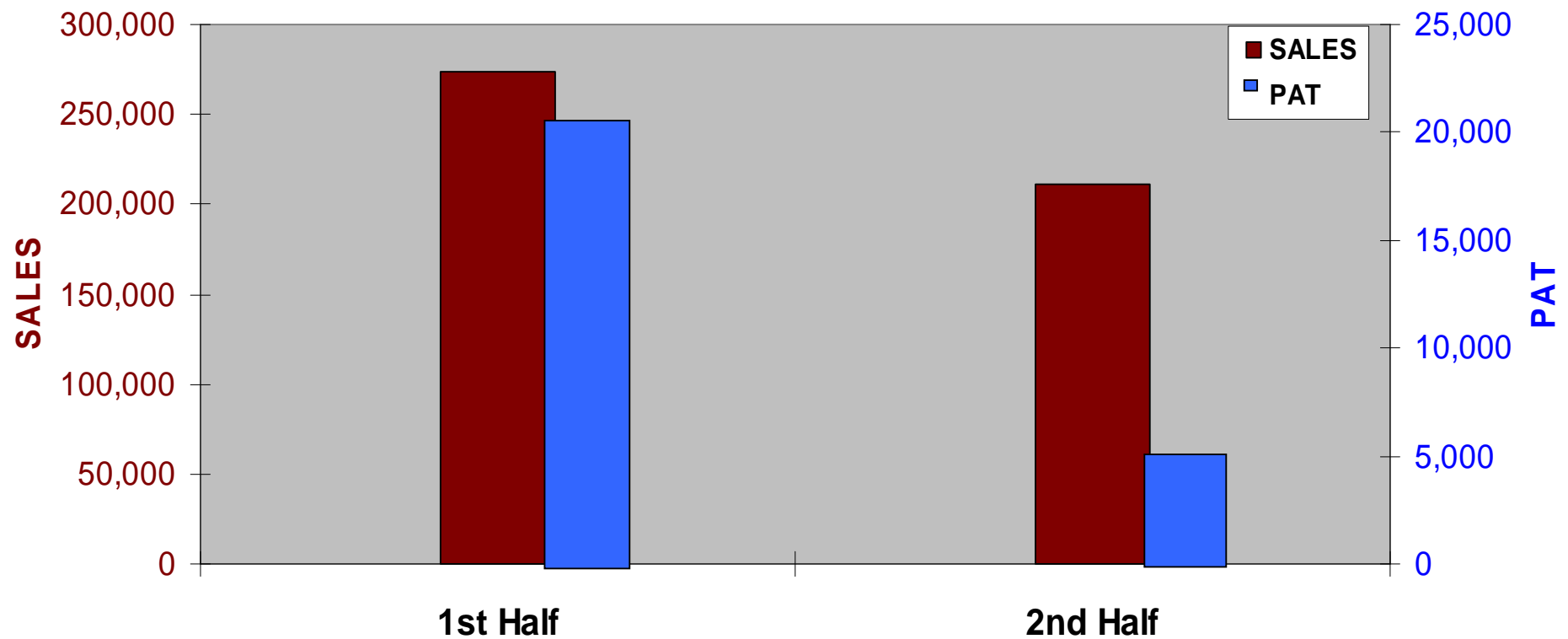




Annual Meeting
Welcome

Financial Highlights of Last Year \$ 000s

A Story of two Halves



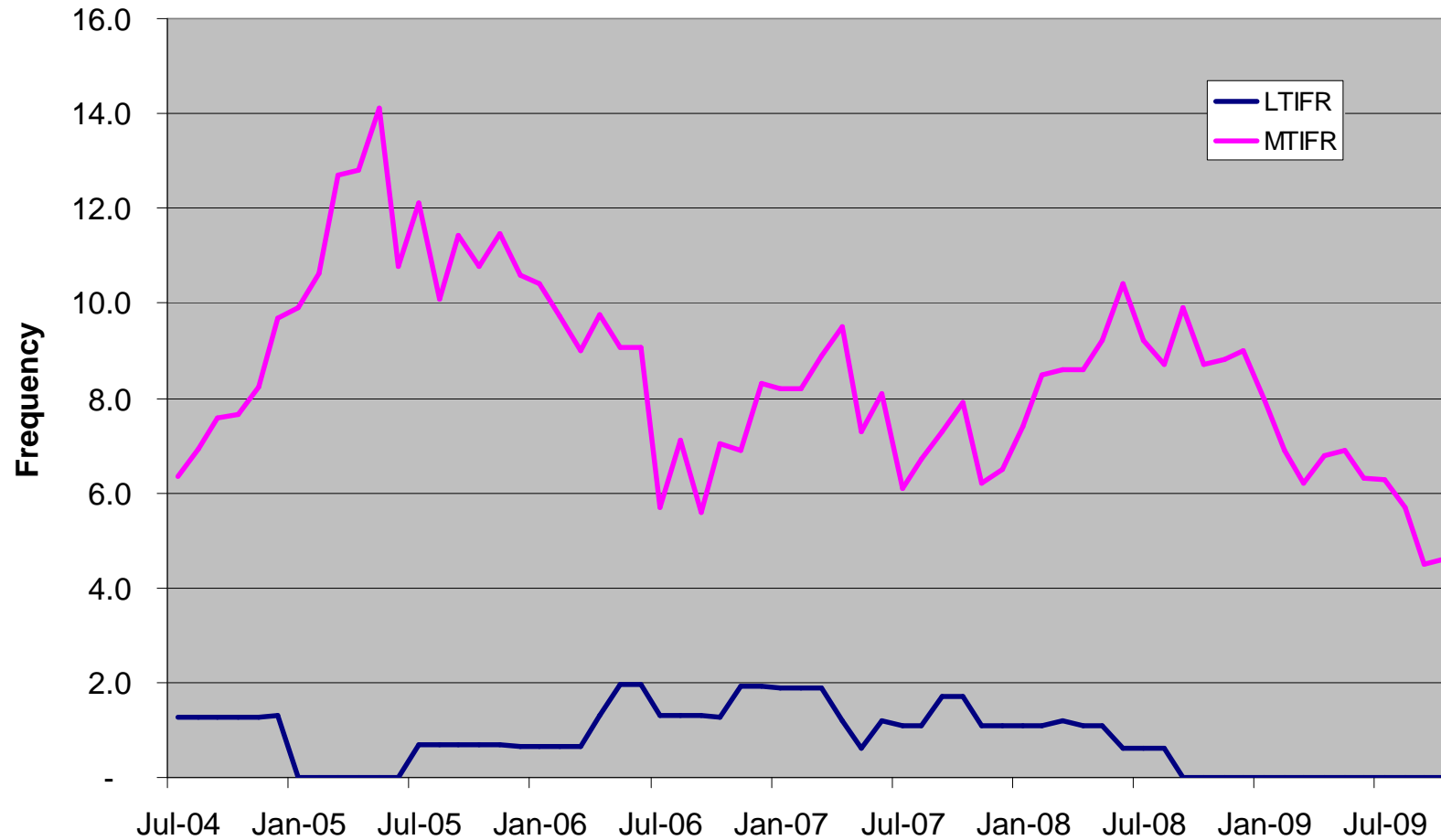
Source: Company Published Reports



I CARE

**about my safety
about others safety
about visitors safety**

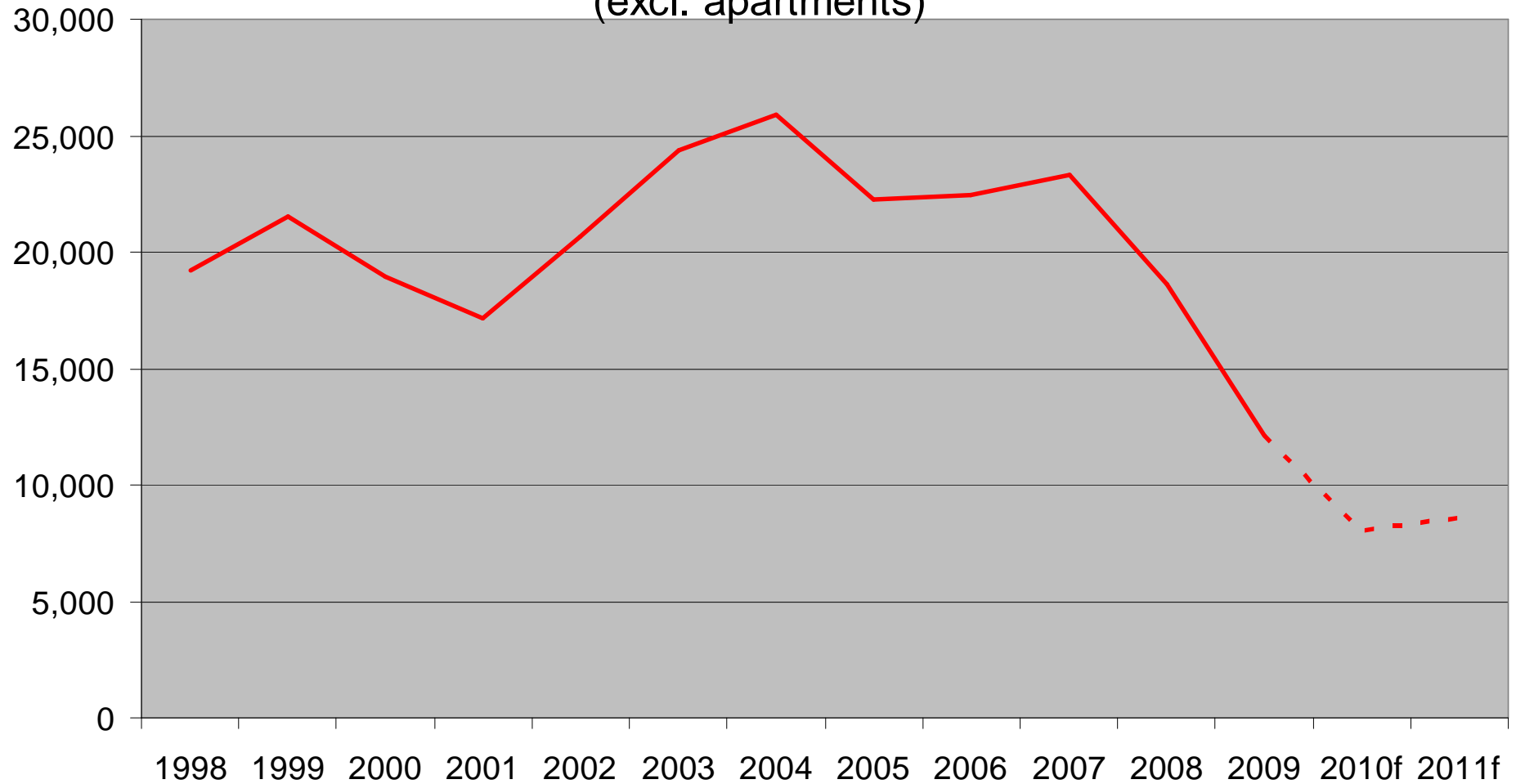
Injury Frequency per million Manhours



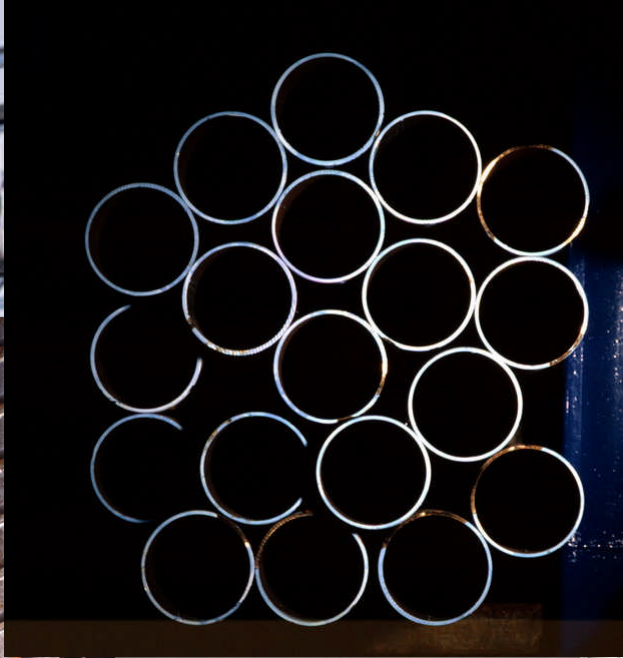
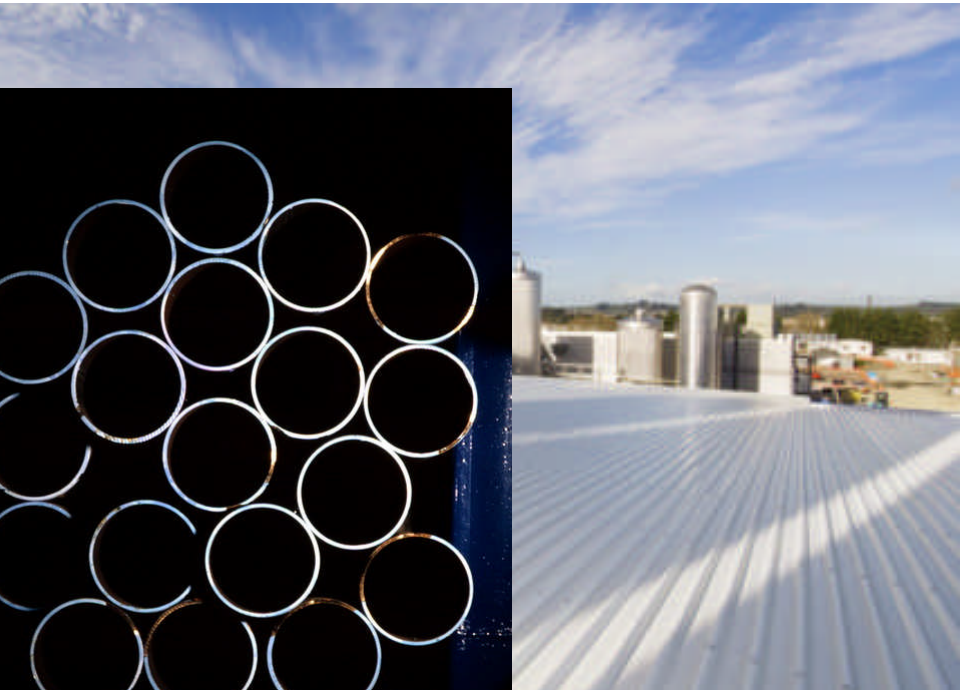
Source: Company Reports



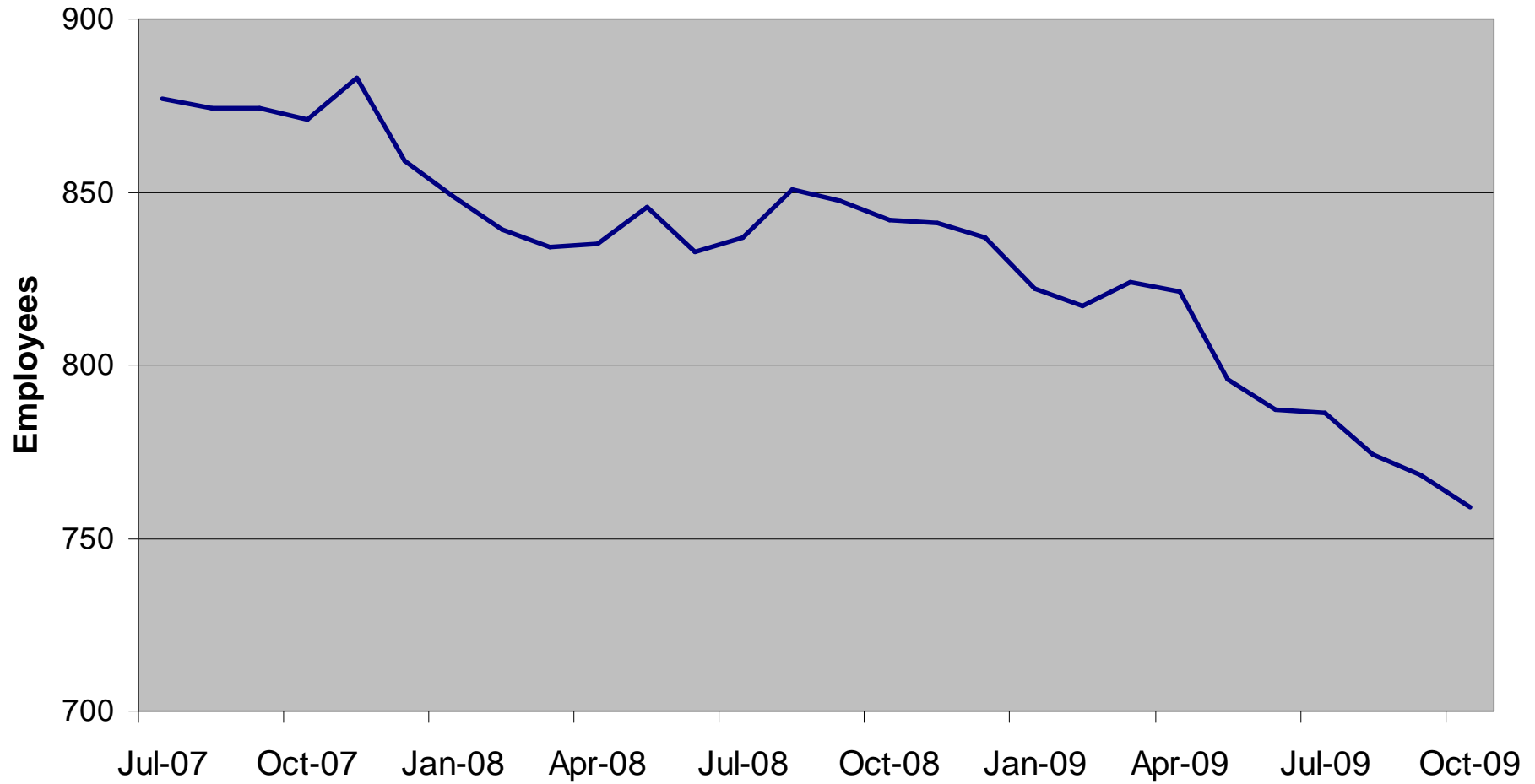
Dwelling Consent Numbers for Sept. Years (excl. apartments)



Source: Stats NZ & NZIER forecast



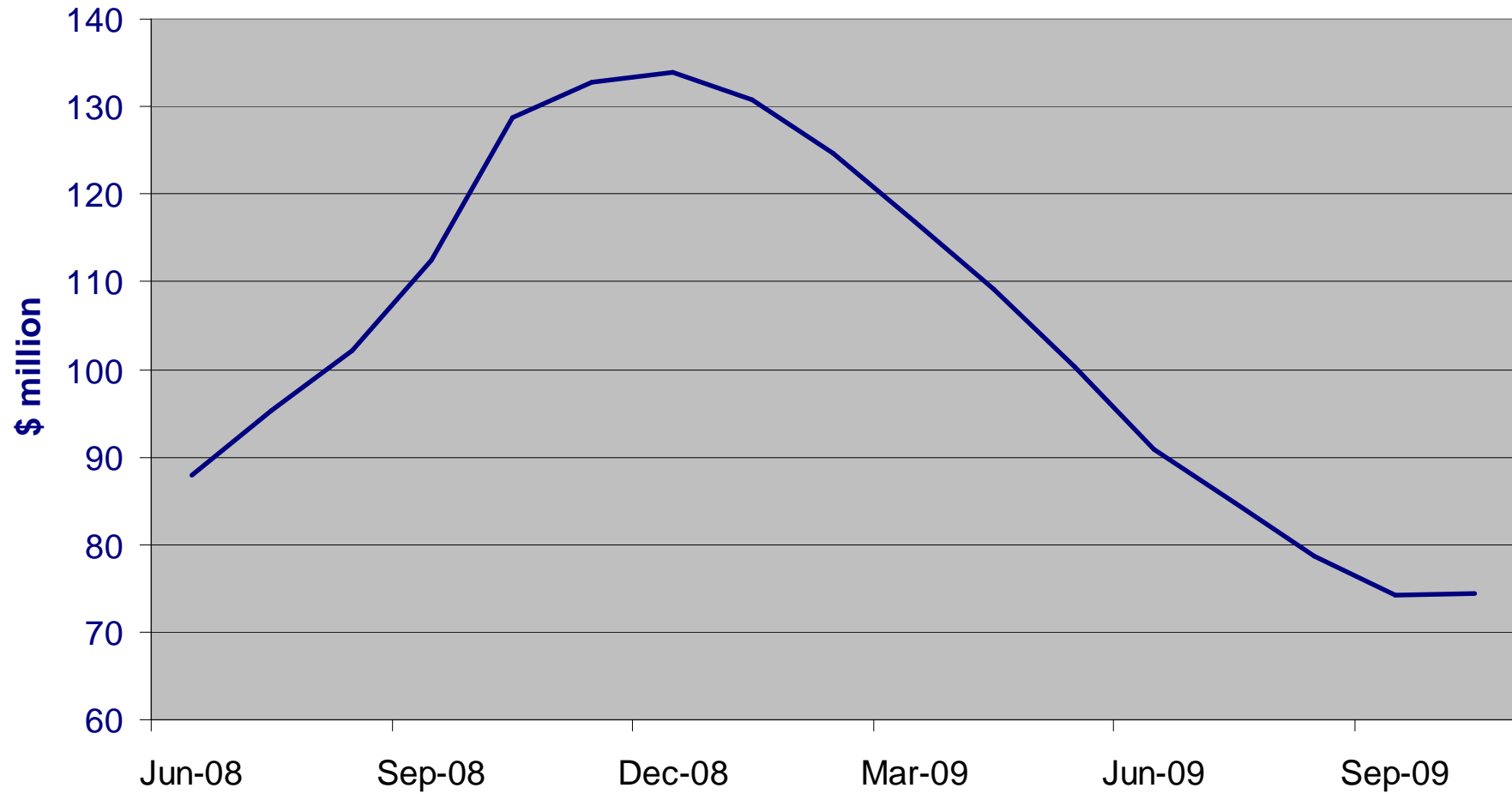
Employee Numbers - Steel & Tube Holdings



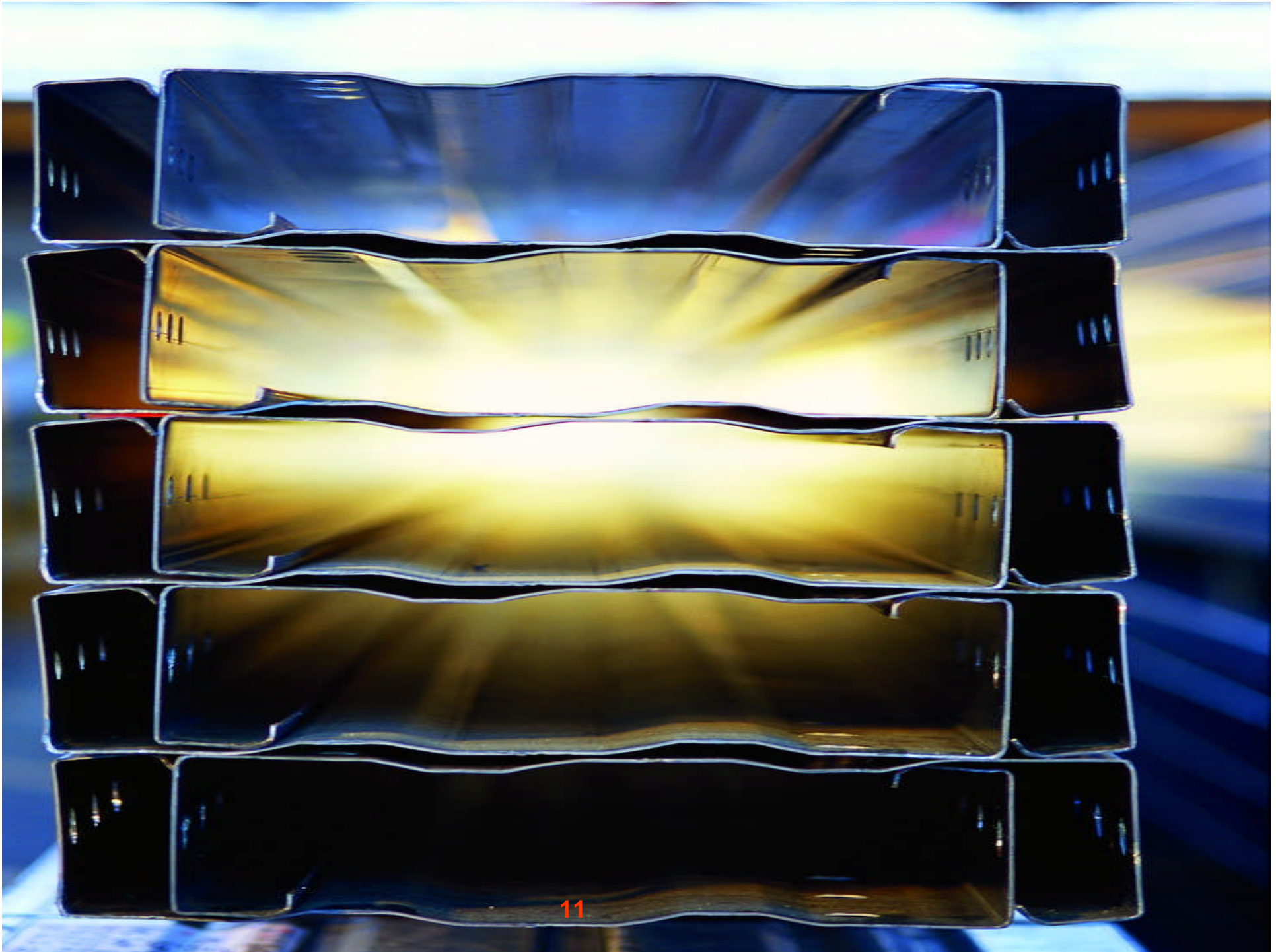
Source: Company Reports



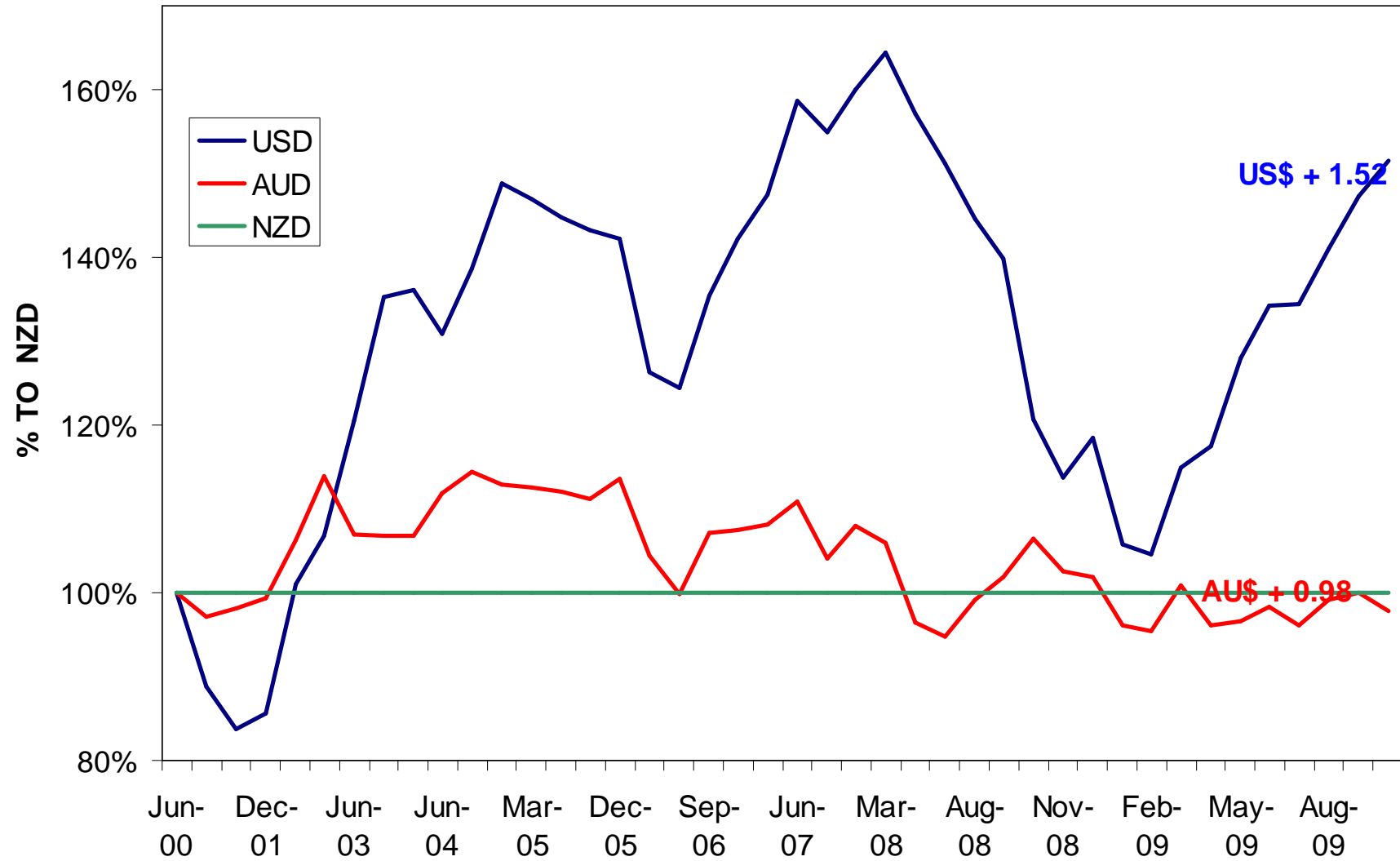
Steel & Tube Holdings Stock \$ million



Source: Company Reports

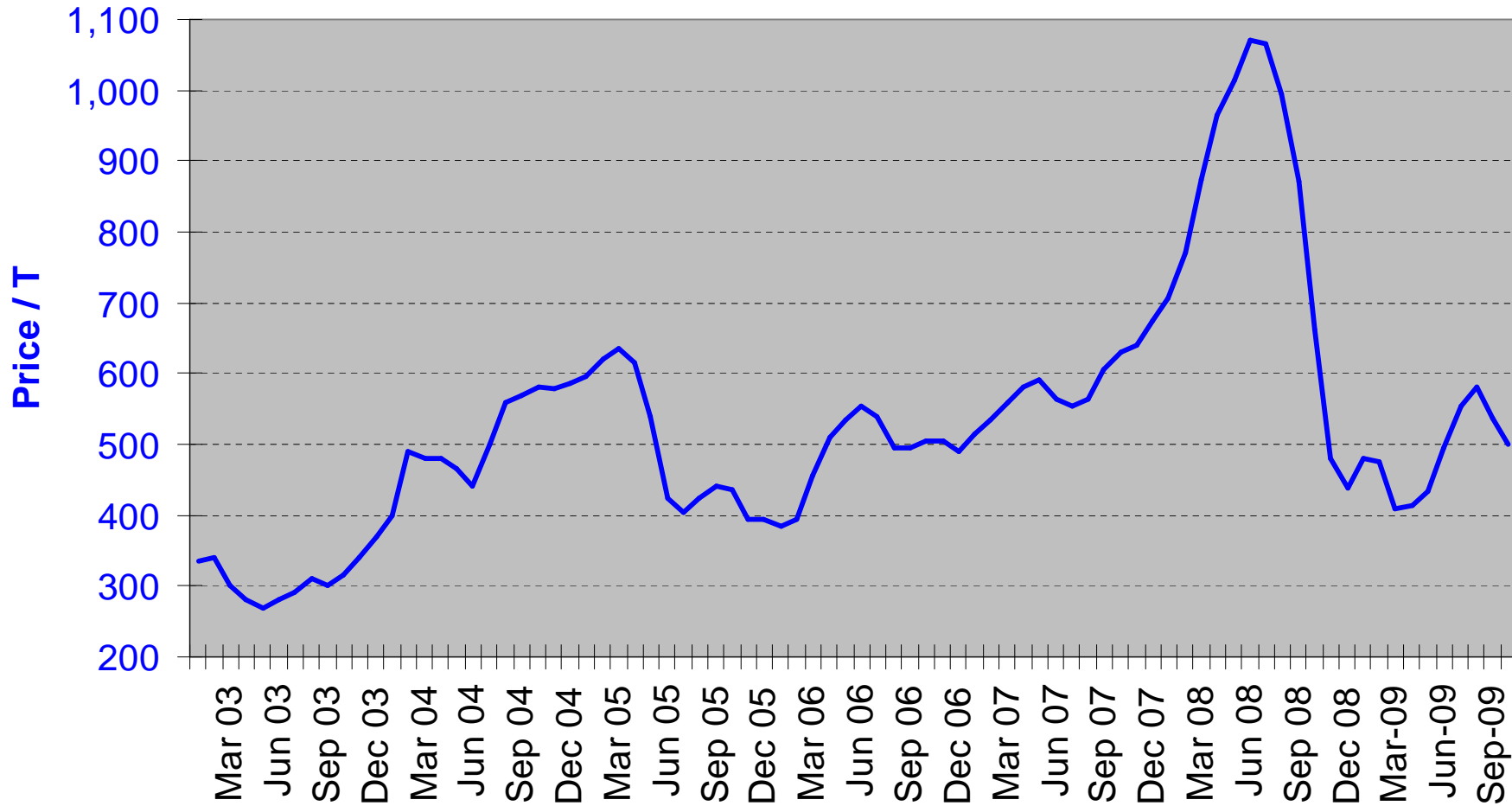


NZD vs AUD & USD Monthend Exchange Rates



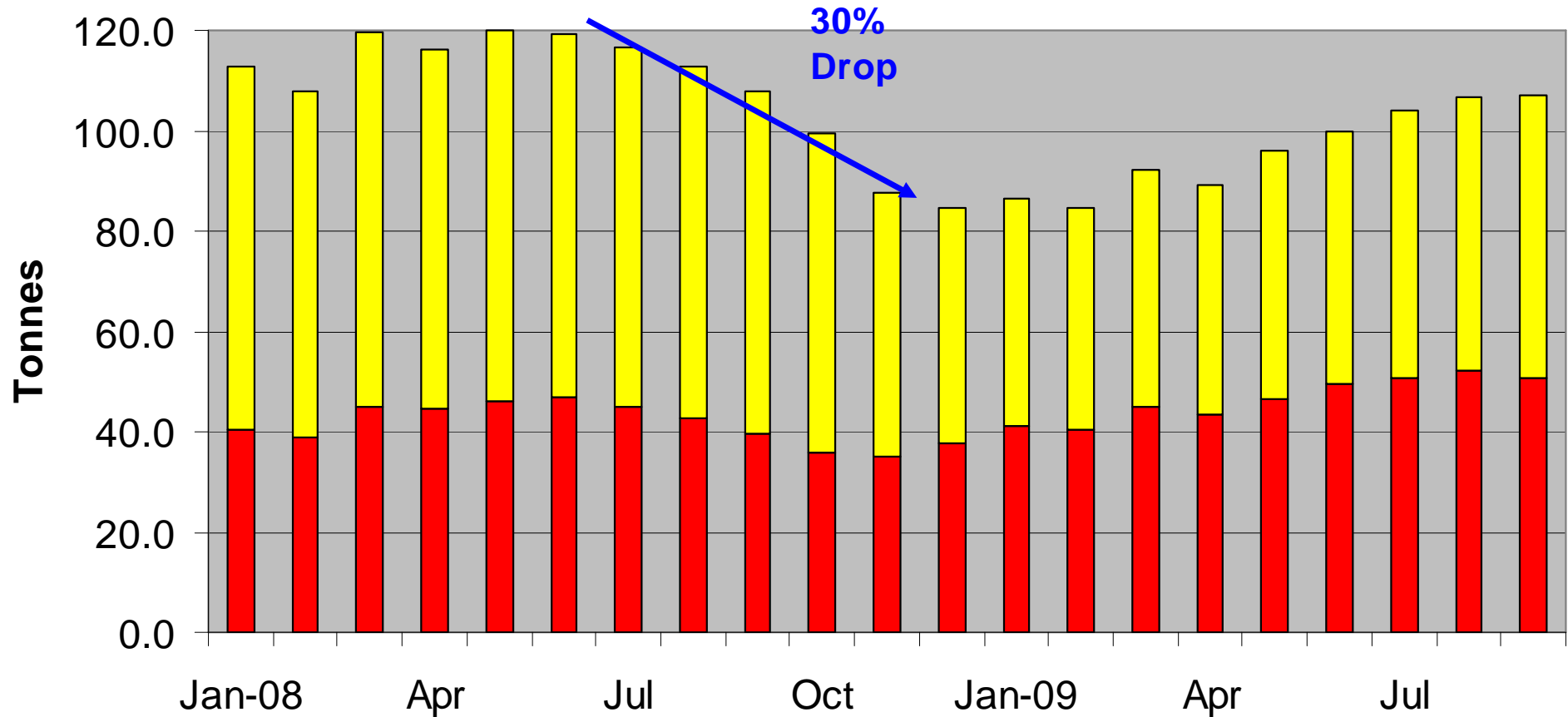
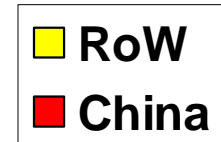
Source: ANZ Bank

Price of HR Coils USD/T- East Asia



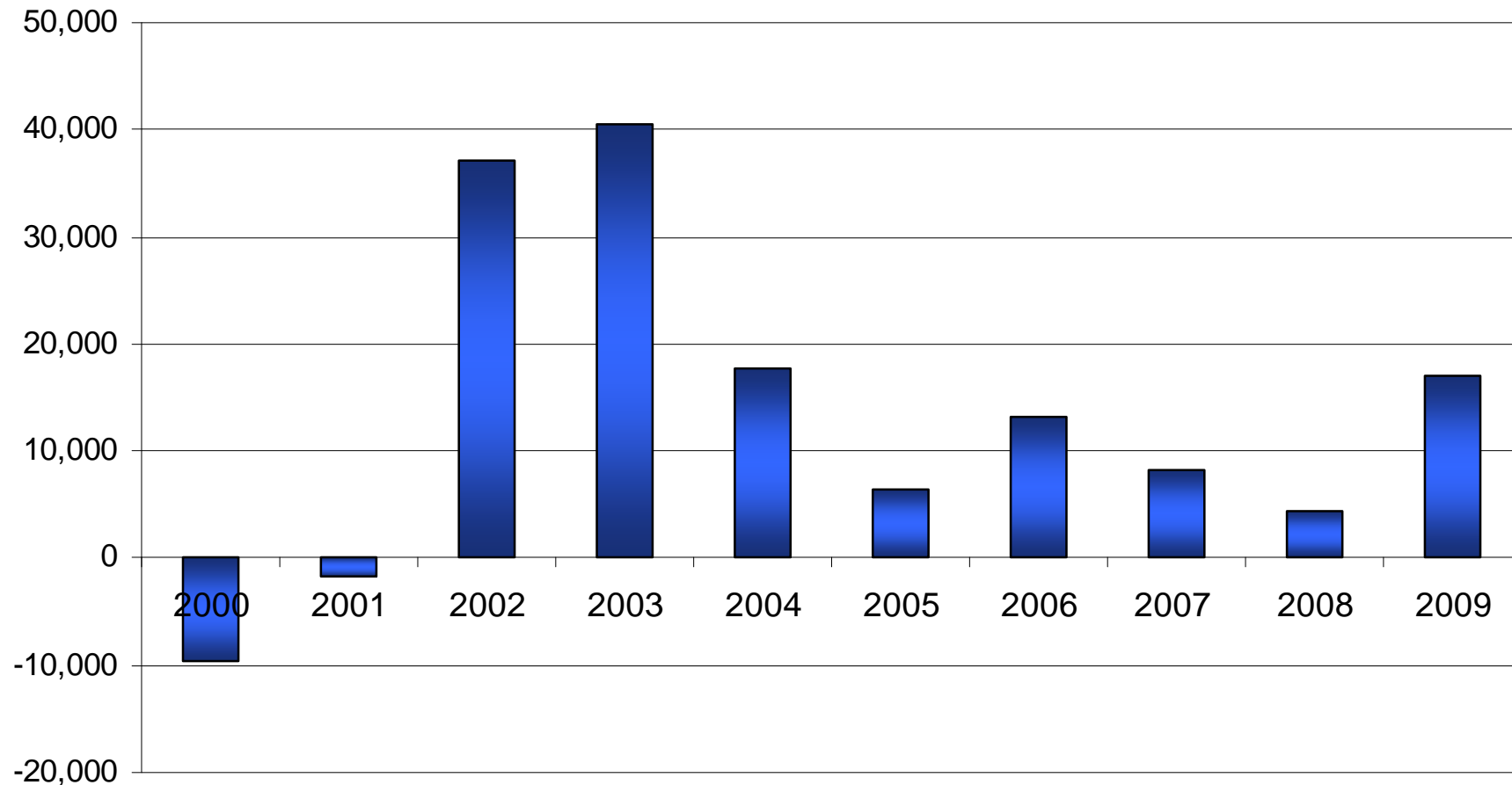
Source: Steel Business Briefings

World Steel Production Trend- m Tonnes

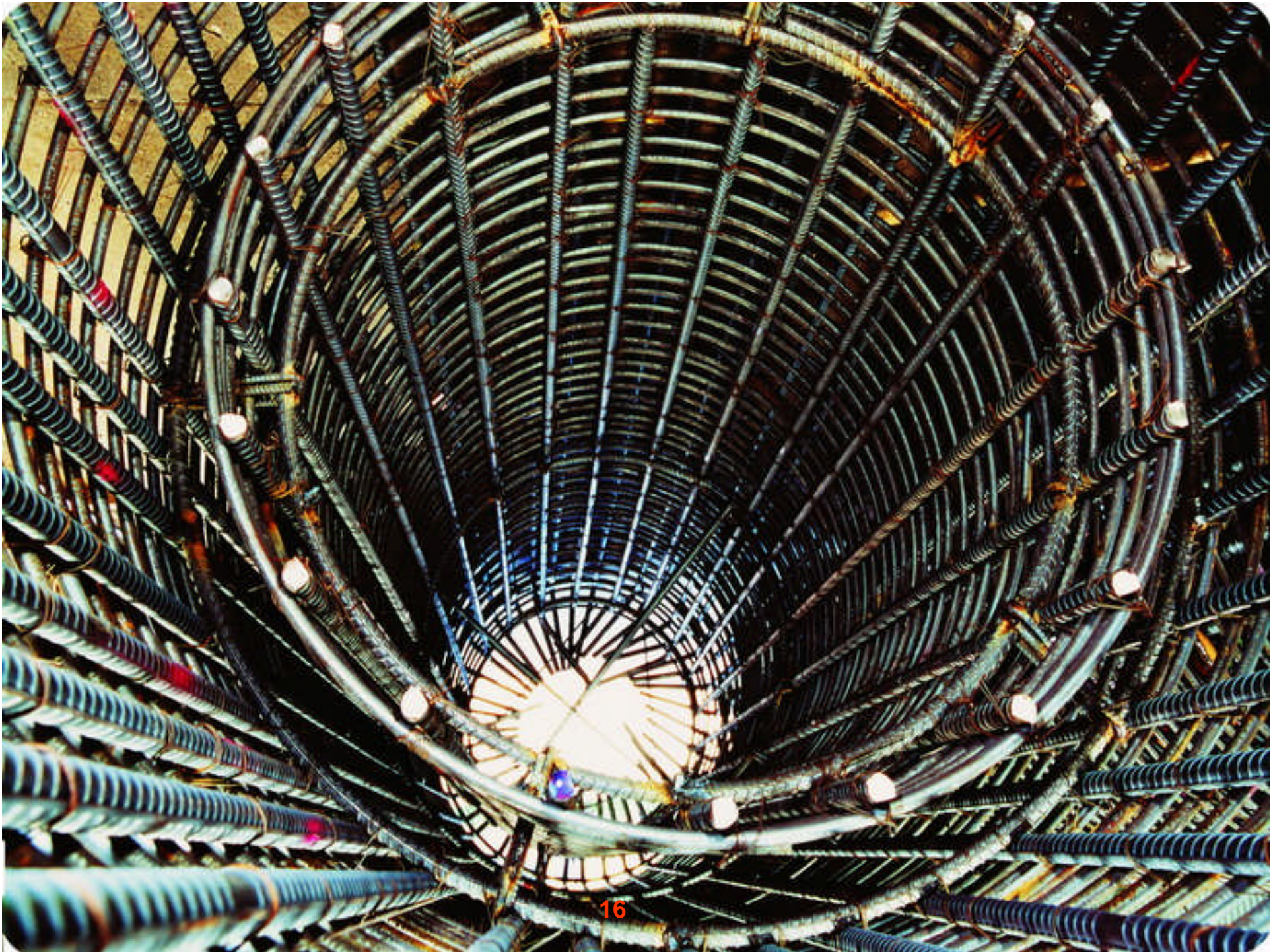


Source: IISI

Net Actual Migration- Permanent & Long-Term *Rolling 12 Months - Sept. Years*



Source: Stats NZ



New Roofing & Purlin Facility- Highbrook

