

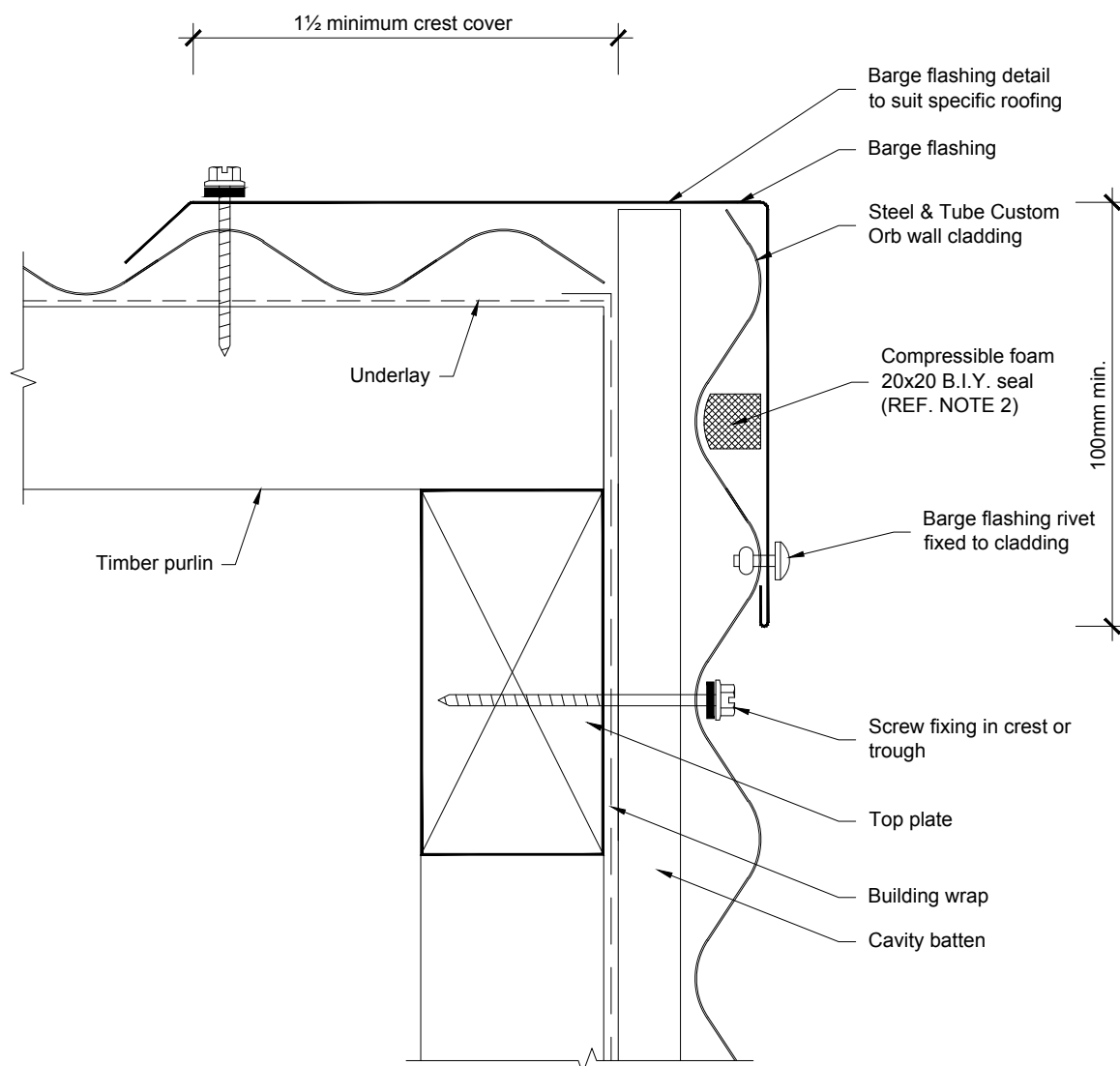
**NOTES:**

1. Cavity battens containing copper must be separated from steel cladding by building paper, building wrap, DPC/PVC strips or by painting, otherwise use uPVC Cavibat<sup>TM</sup>.

hcav\_custom\_orb-balustrade

**Balustrade For Horizontal Custom Orb**  
Cross Section

All dimensions in millimetres  
Scale 1:2  
16/01/12



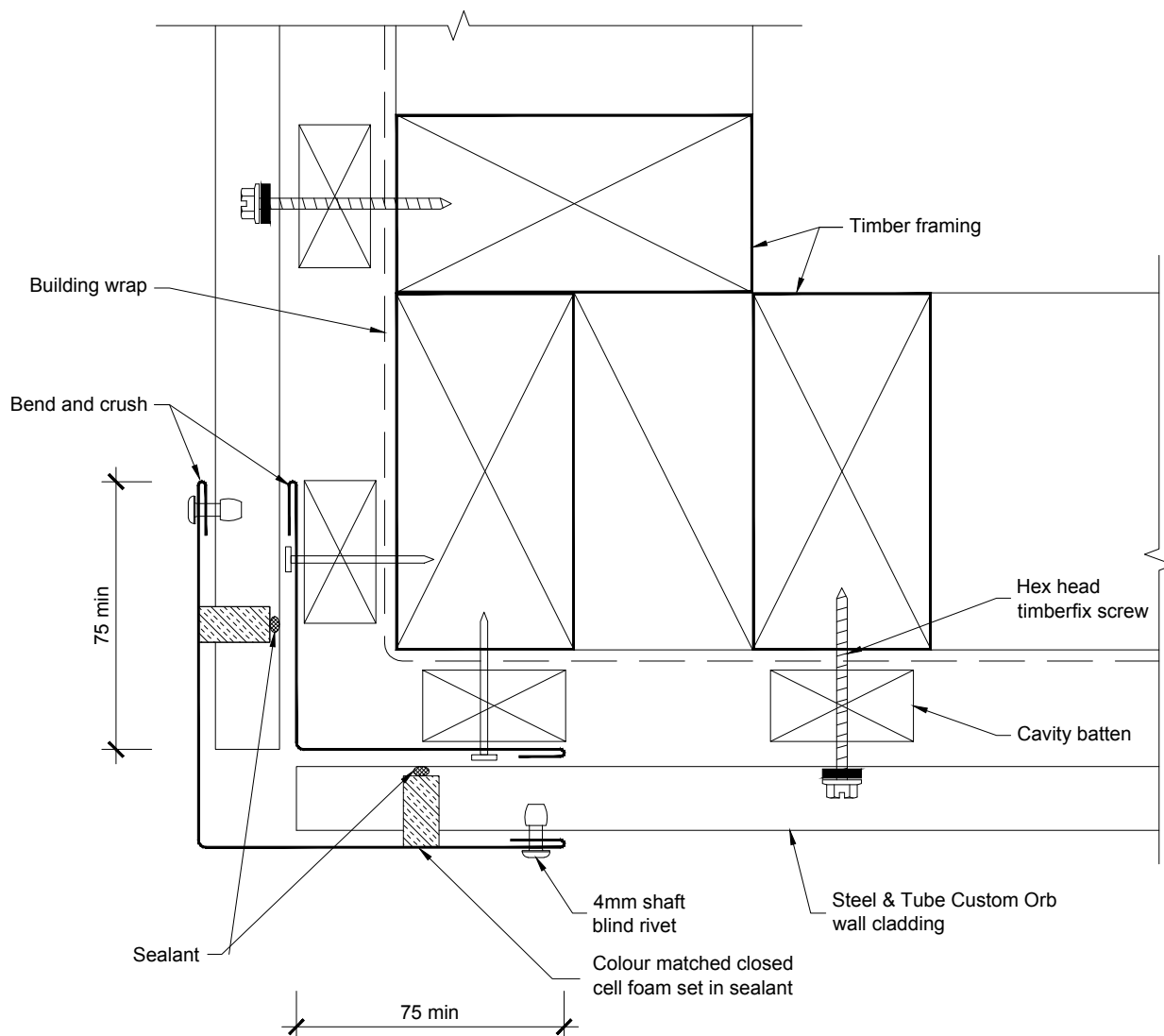
**NOTES:**

1. Cavity battens containing copper must be separated from steel cladding by building paper, building wrap, DPC/PVC strips or by painting, otherwise use uPVC Cavibat <sup>TM</sup>.
2. B.I.Y. available from DMA Flexible Foam 0800 862 625

hcav\_custom\_orb-barge

**Flush Barge For Horizontal Custom Orb**  
Cross Section

All dimensions in millimetres  
Scale 1:2  
16/01/12



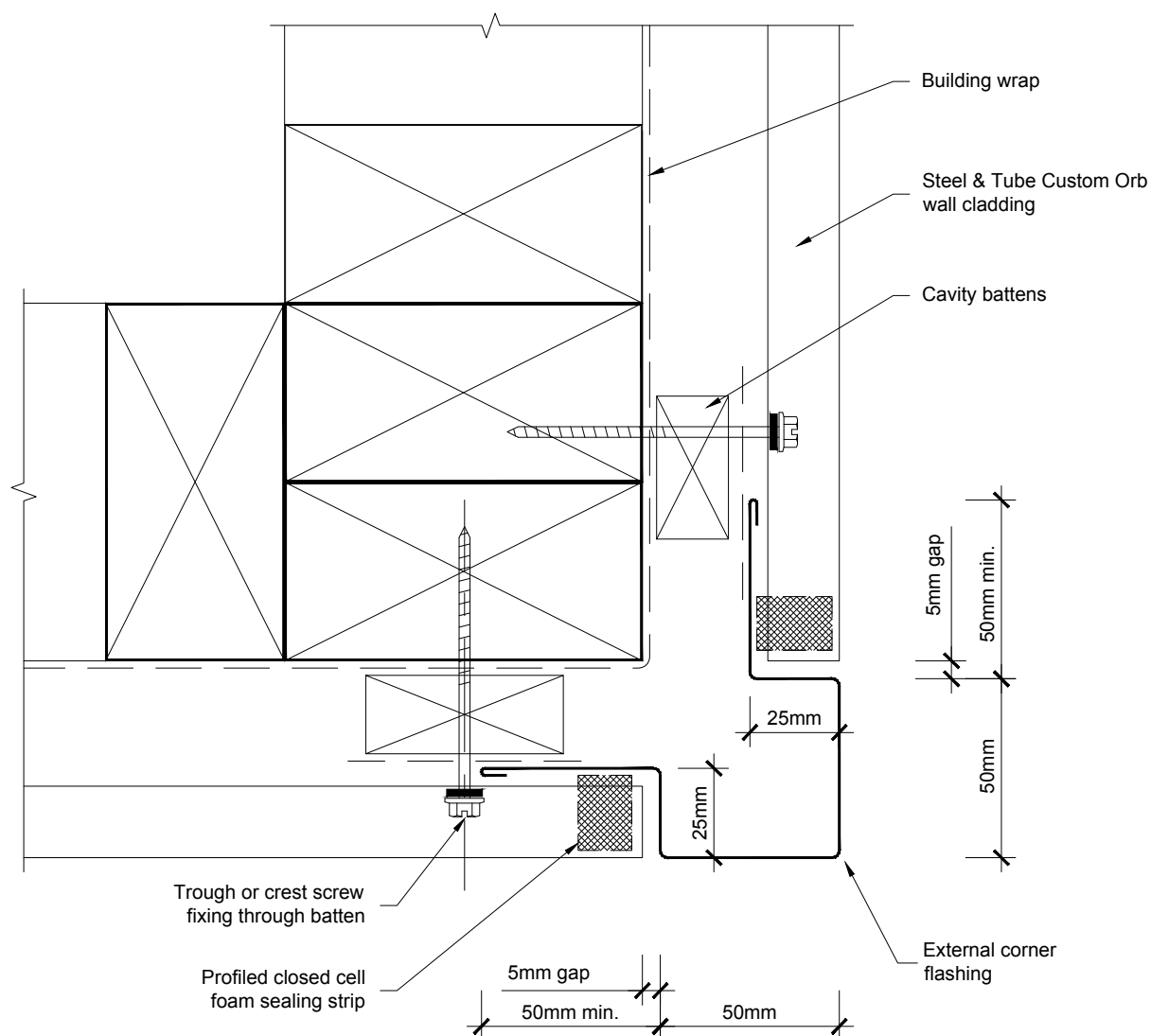
**NOTES:**

1. Cavity battens containing copper must be separated from steel cladding by building paper, building wrap, DPC/PVC strips or by painting, otherwise use uPVC Cavibat <sup>TM</sup>

hcav\_custom\_orb-corn\_ext\_cover

**Corner Flashing For Horizontal Custom Orb**  
Cover Flashed External Corner

All dimensions in millimetres  
Scale 1:2  
16/01/12



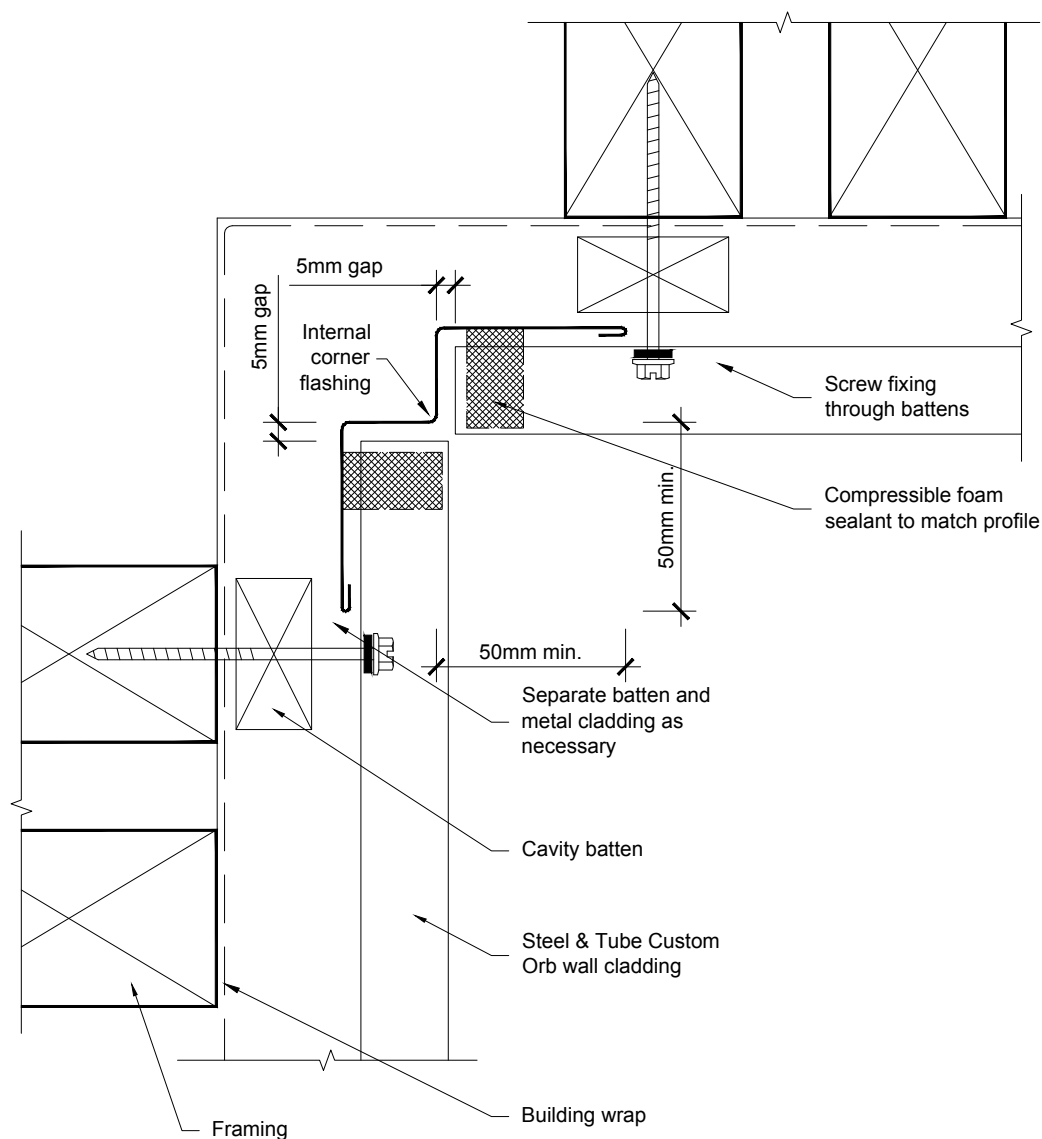
**NOTES:**

1. Cavity battens containing copper must be separated from steel cladding by building paper, building wrap, DPC/PVC strips or by painting, otherwise use uPVC Cavibat <sup>TM</sup>

hcav\_custom\_orb-corn\_ext

**Corner Flashings For Horizontal Custom Orb**  
Express Flashed External Corner Cross Section

All dimensions in millimetres  
Scale 1:2  
16/01/12



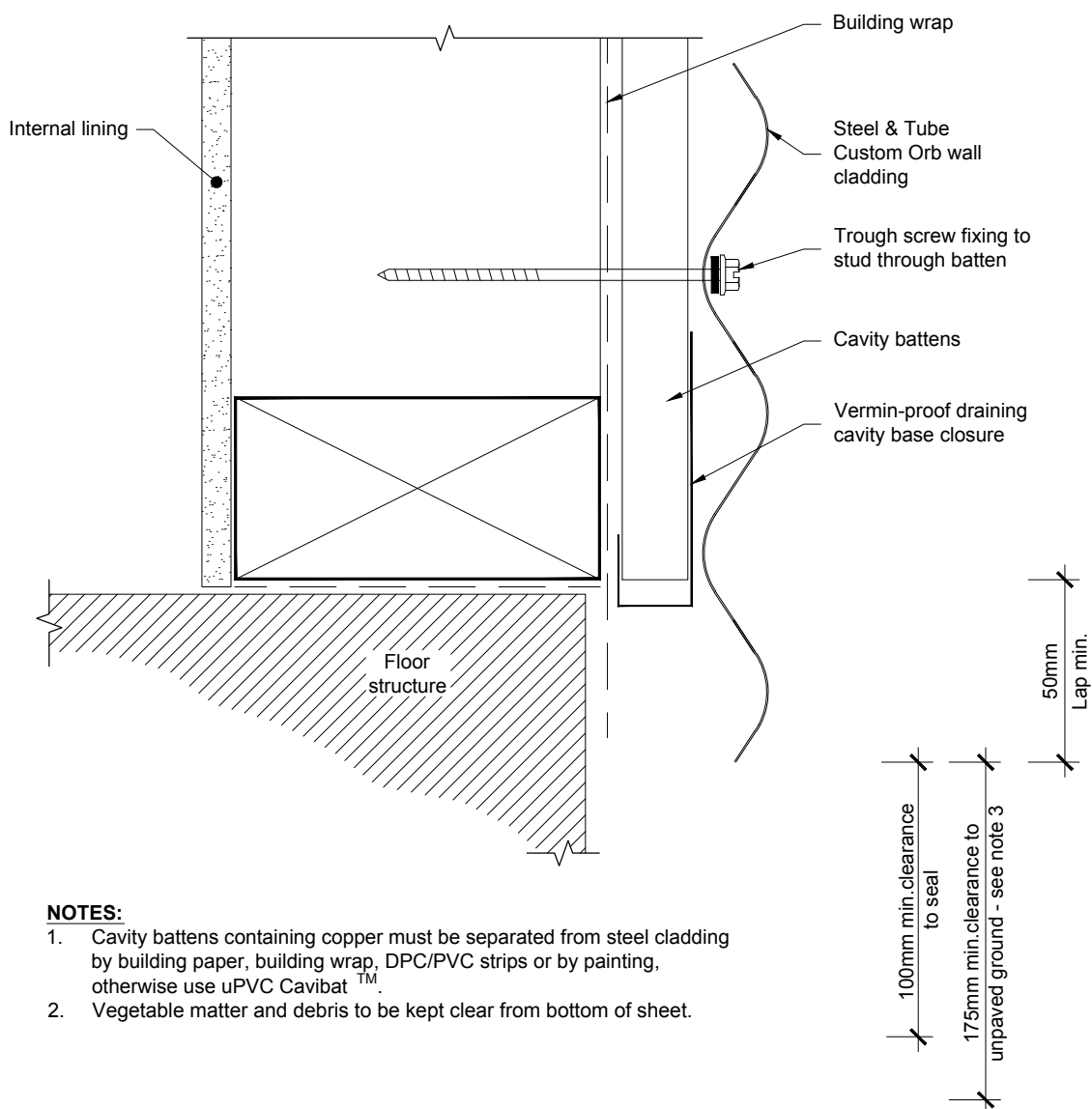
**NOTES:**

1. Cavity battens containing copper must be separated from steel cladding by building paper, building wrap, DPC/PVC strips or by painting, otherwise use uPVC Cavibat<sup>TM</sup>.

hcav\_custom\_orb-corn\_internal

**Corner Flashings For Horizontal Custom Orb**  
Internal Corner Flashing Cross Section

All dimensions in millimetres  
Scale 1:2  
16/01/12



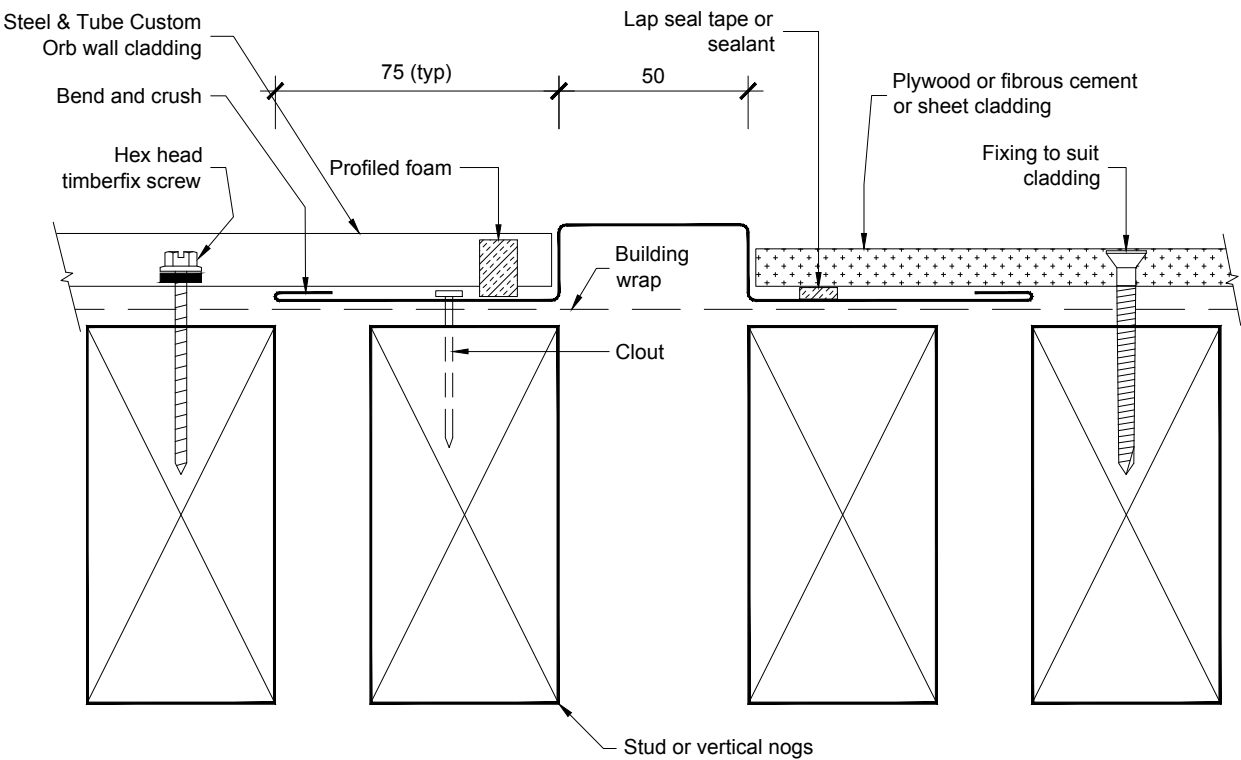
**NOTES:**

1. Cavity battens containing copper must be separated from steel cladding by building paper, building wrap, DPC/PVC strips or by painting, otherwise use uPVC Cavibat <sup>TM</sup>.
2. Vegetable matter and debris to be kept clear from bottom of sheet.

hcav\_custom\_orb-jctn\_wall\_floor

**Bottom Of Cladding For Horizontal Custom Orb**  
Cross Section

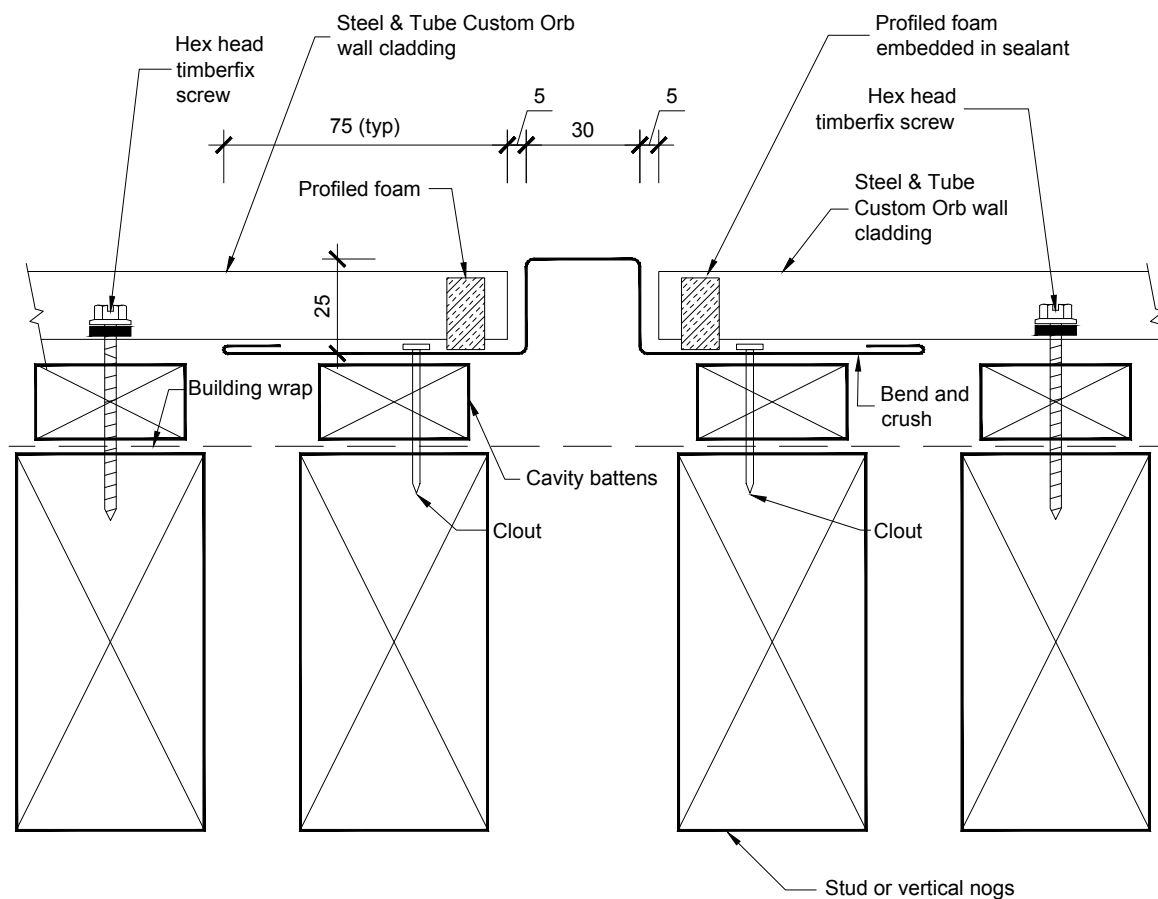
All dimensions in millimetres  
Scale 1:2  
16/01/12



Vertical Butt Joint (for Changes In Cladding Material)  
Plan

h cav\_custom\_orb-join\_chg\_mat

All dimensions in millimetres  
Scale 1:2  
16/01/12



#### NOTES:

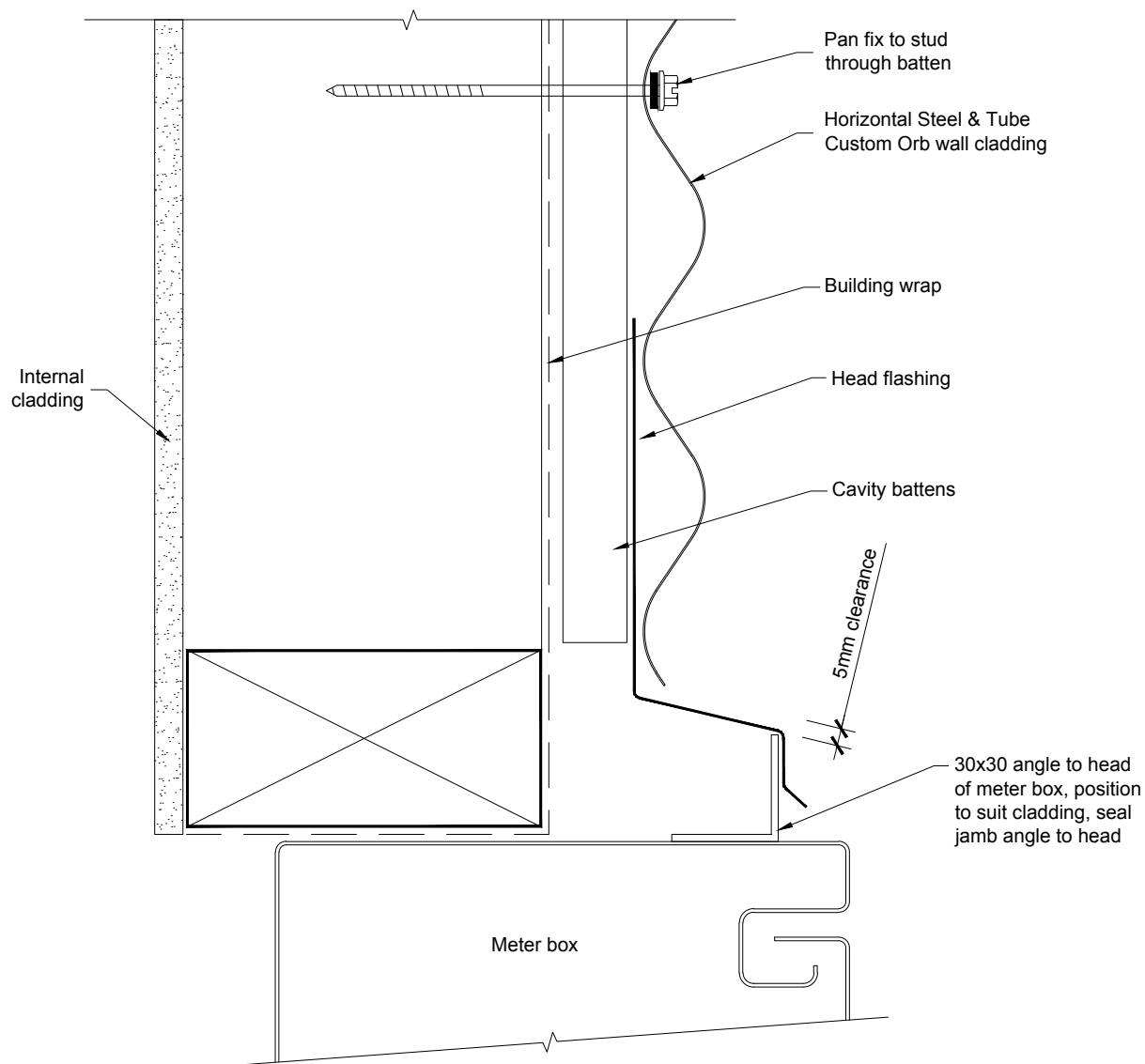
1. Cavity battens containing copper must be separated from steel cladding by building paper, building wrap, DPC/PVC strips or by painting, otherwise use uPVC Cavibat <sup>TM</sup>.

hcav\_custom\_orb-jointer

## Vertical Butt Joint (for Breaks In Cladding)

### Plan

All dimensions in millimetres  
Scale 1:2  
16/01/12



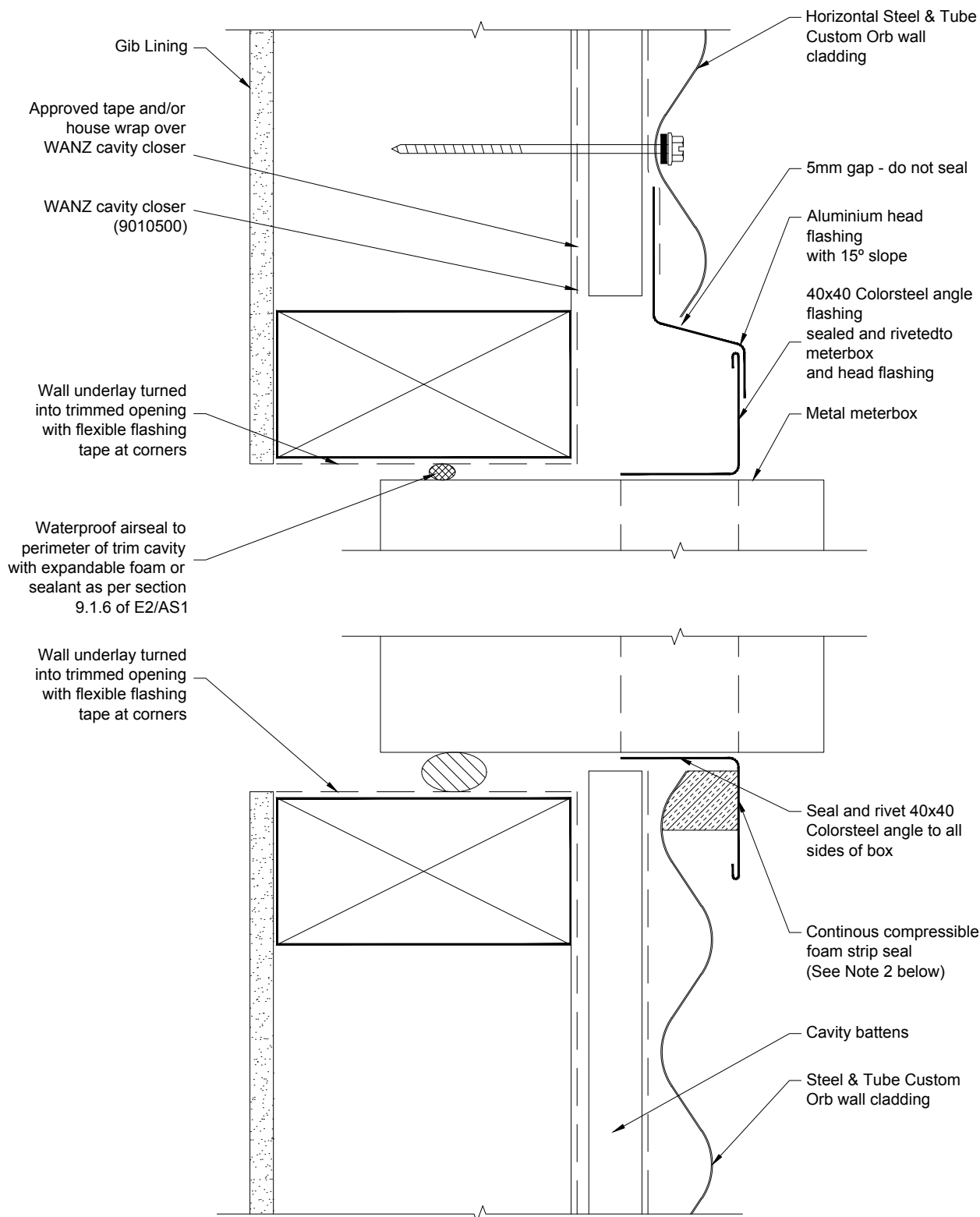
**NOTES:**

1. Cavity battens containing copper must be separated from steel cladding by building paper, building wrap, DPC/PVC strips or by painting, otherwise use uPVC Cavibat <sup>TM</sup>.

hcav\_custom\_orb-mbox\_flash\_head

**Meter Box Flashing for Horizontal Profiled Metal**  
Cross Section

All dimensions in millimetres  
Scale 1:2  
16/01/12



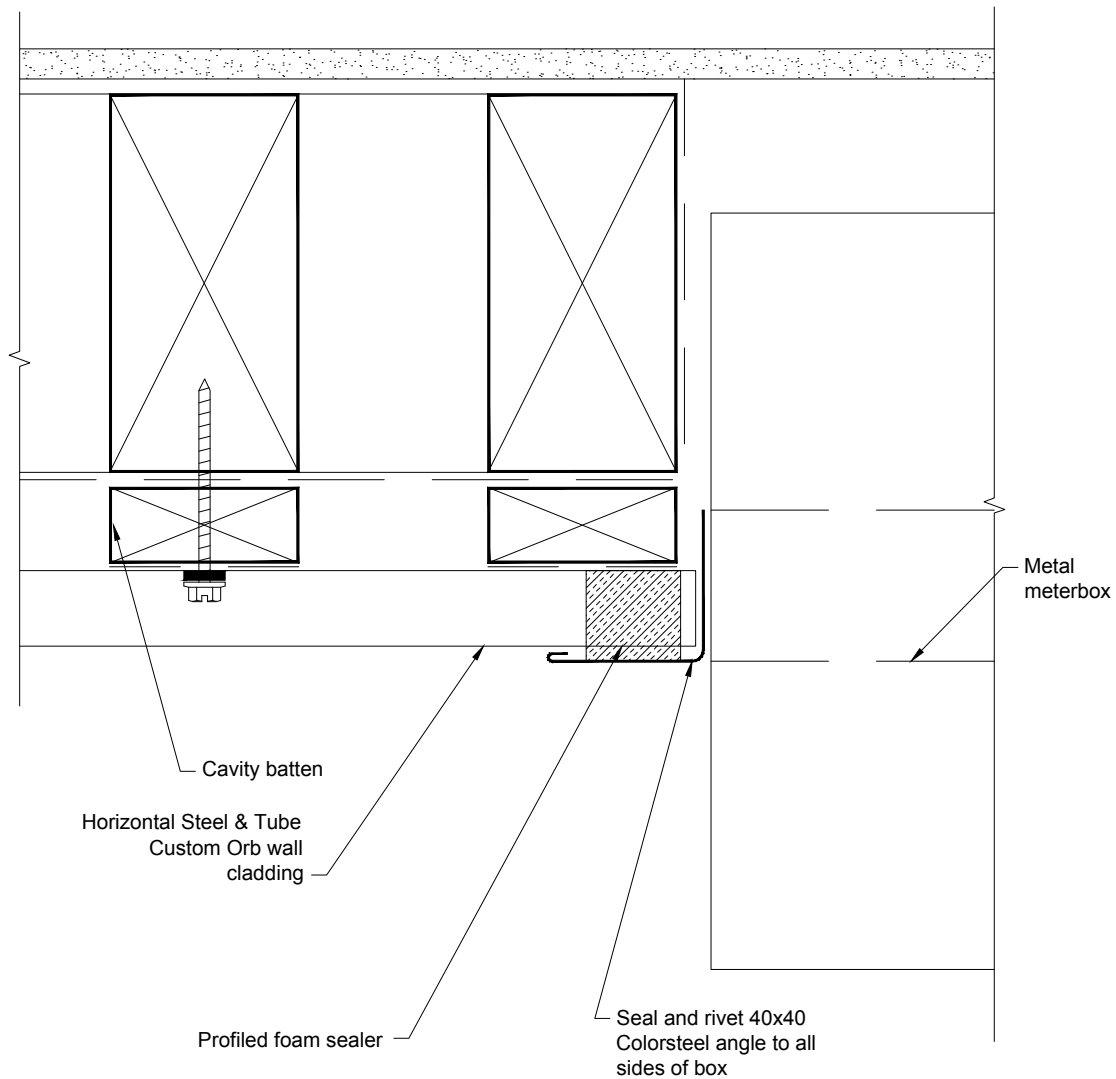
**Notes:**

1. Cavity battens containing copper must be separated from steel cladding by building paper, building wrap, DPC/PVC strips or by painting, otherwise use uPVC Cavibat<sup>TM</sup>
2. B.I.Y. available from DMA Flexible Foam 0800 862 625

hcav\_custom\_orb-mbox\_flash\_head\_sill

**Meterbox Heading and Sill Flashing  
Cross Section**

All dimensions in millimetres  
Scale 1:2  
16/01/12



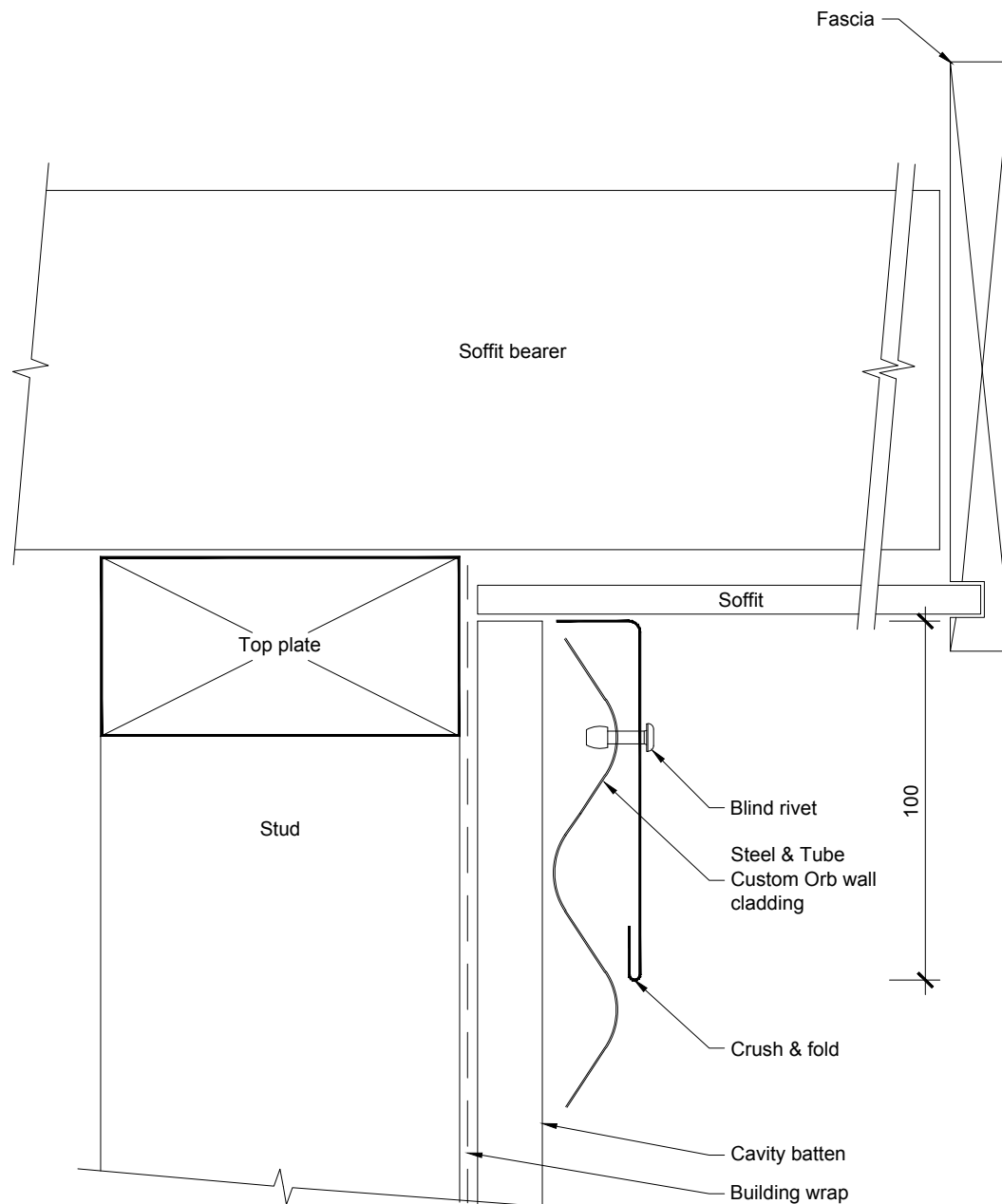
**NOTES:**

1. Cavity battens containing copper must be separated from steel cladding by building paper, building wrap, DPC/PVC strips or by painting, otherwise use uPVC Cavibat<sup>TM</sup>.

**Meterbox Jamb Flashing**  
Cross Section

hcav\_custom\_orb-mbox\_flash\_jamb

All dimensions in millimetres  
Scale 1:2  
16/01/12



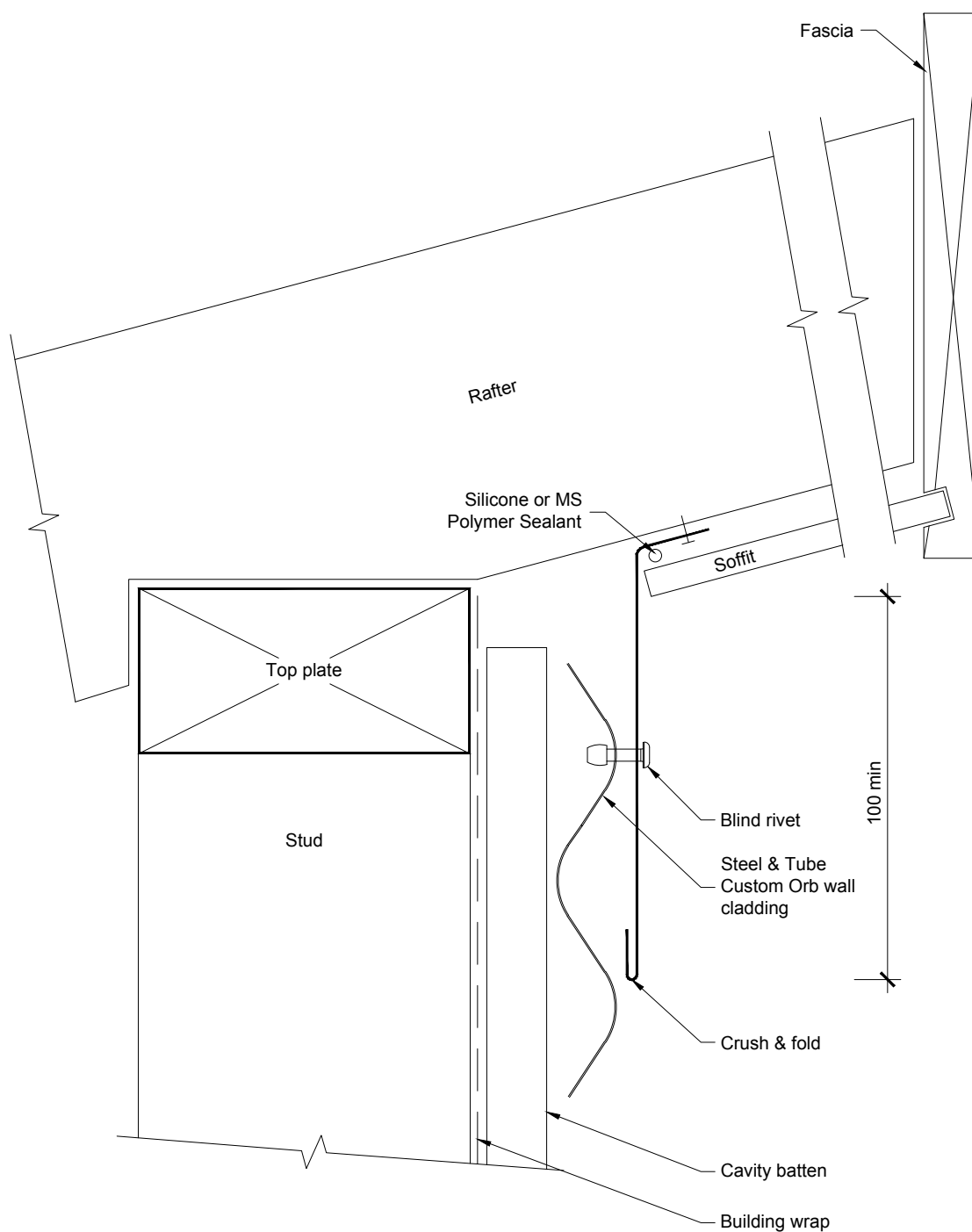
**Note:**

1. Cavity battens containing copper must be separated from steel cladding by building paper, building wrap, DPC/PVC strips or by painting, otherwise use uPVC Cavibat <sup>TM</sup>.
2. For raking soffits, stop end horizontal sheets at the sloping join.

hcav\_custom\_orb-soff\_hori

**Soffit Line - Horizontal Custom Orb**  
Cross Section

All dimensions in millimetres  
Scale 1:2  
16/01/12



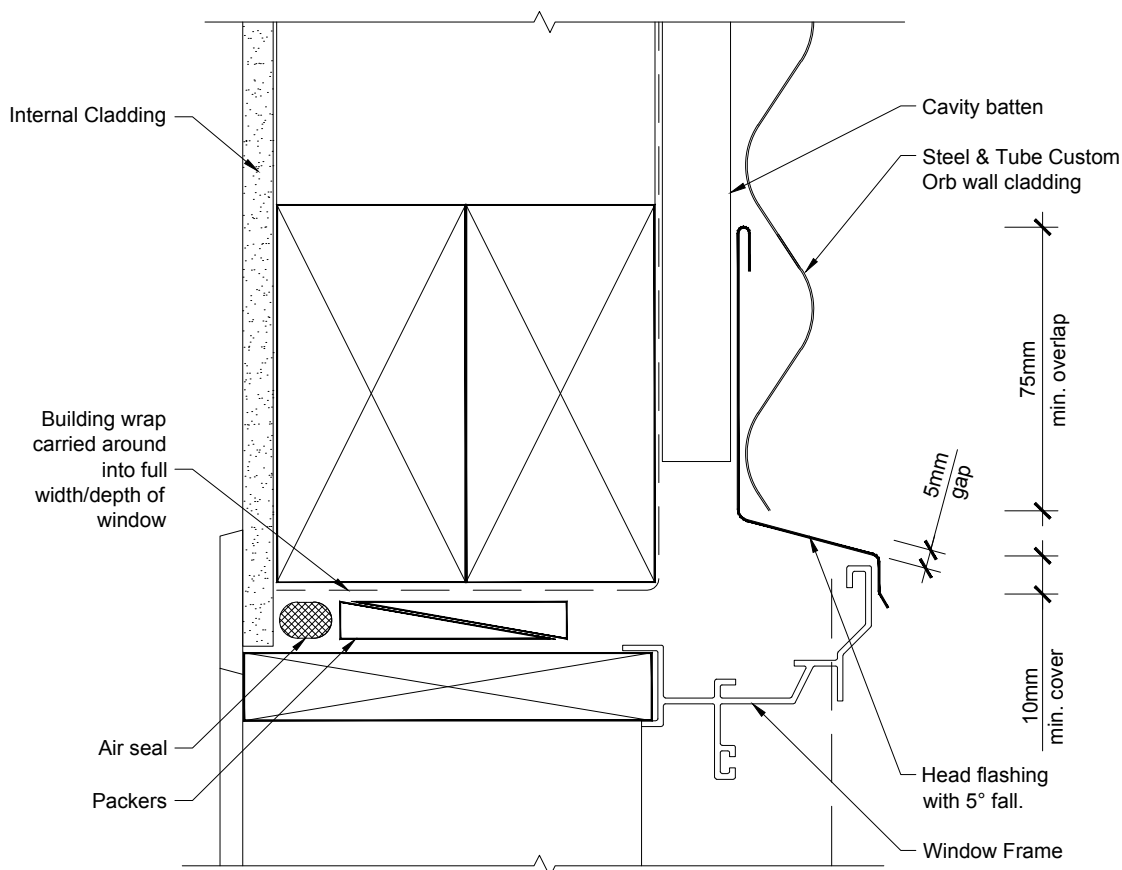
**Note:**

1. Cavity battens containing copper must be separated from steel cladding by building paper, building wrap, DPC/PVC strips or by painting, otherwise use uPVC Cavibat<sup>TM</sup>.
2. For raking soffits, stop end horizontal sheets at the sloping join.

hcav\_custom\_orb-soffit

**Soffit Line - Horizontal Custom Orb Sloping Soffit  
Cross Section**

All dimensions in millimetres  
Scale 1:2  
16/01/12



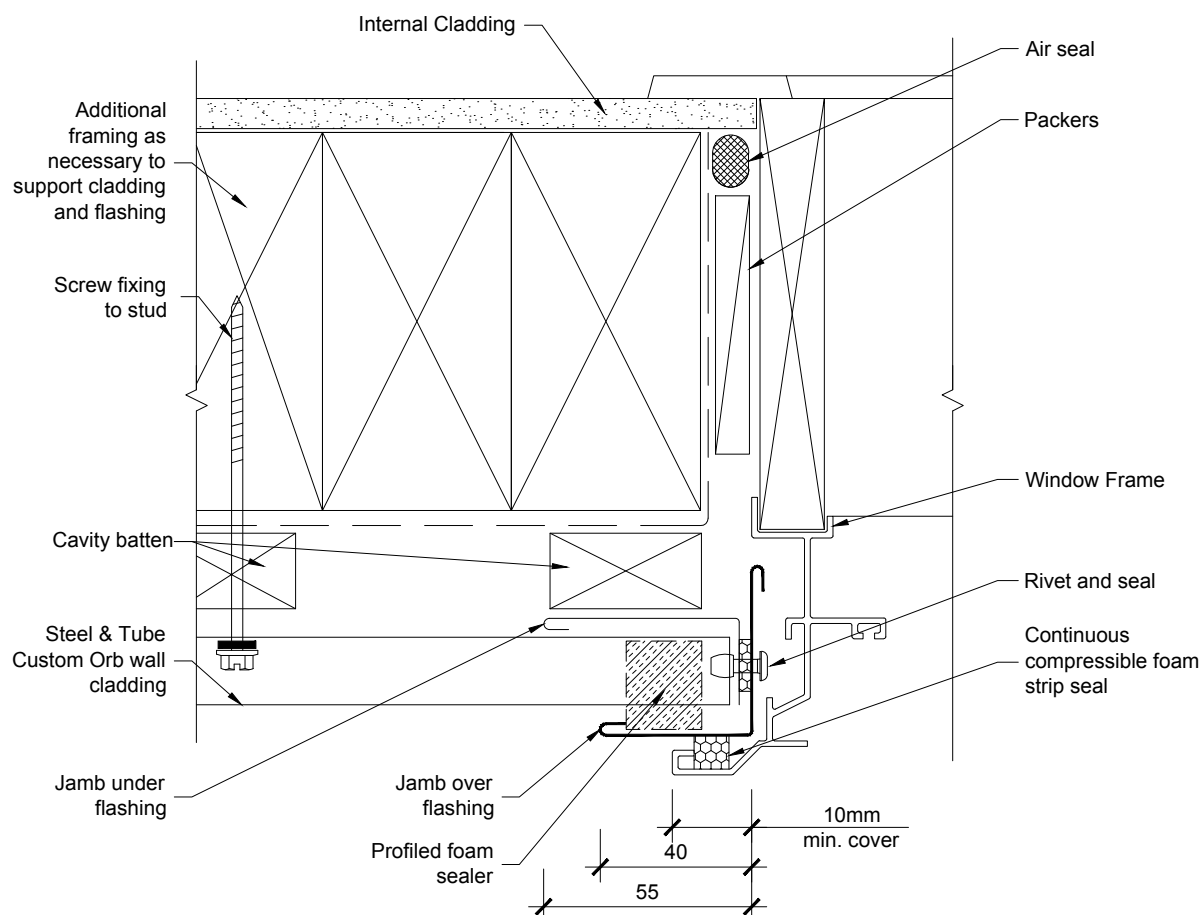
**NOTES:**

1. Cavity battens containing copper must be separated from steel cladding by building paper, building wrap, DPC/PVC strips or by painting, otherwise use uPVC Cavibat<sup>TM</sup>.
2. Architraves are shown for consistency only, detail may be used with rebated liner.
3. Complies with E2/VM1

hcav\_custom\_orb-wind\_alum\_head

**Windows For Horizontal Custom Orb**  
Head Cross Section

All dimensions in millimetres  
Scale 1:2  
16/01/12



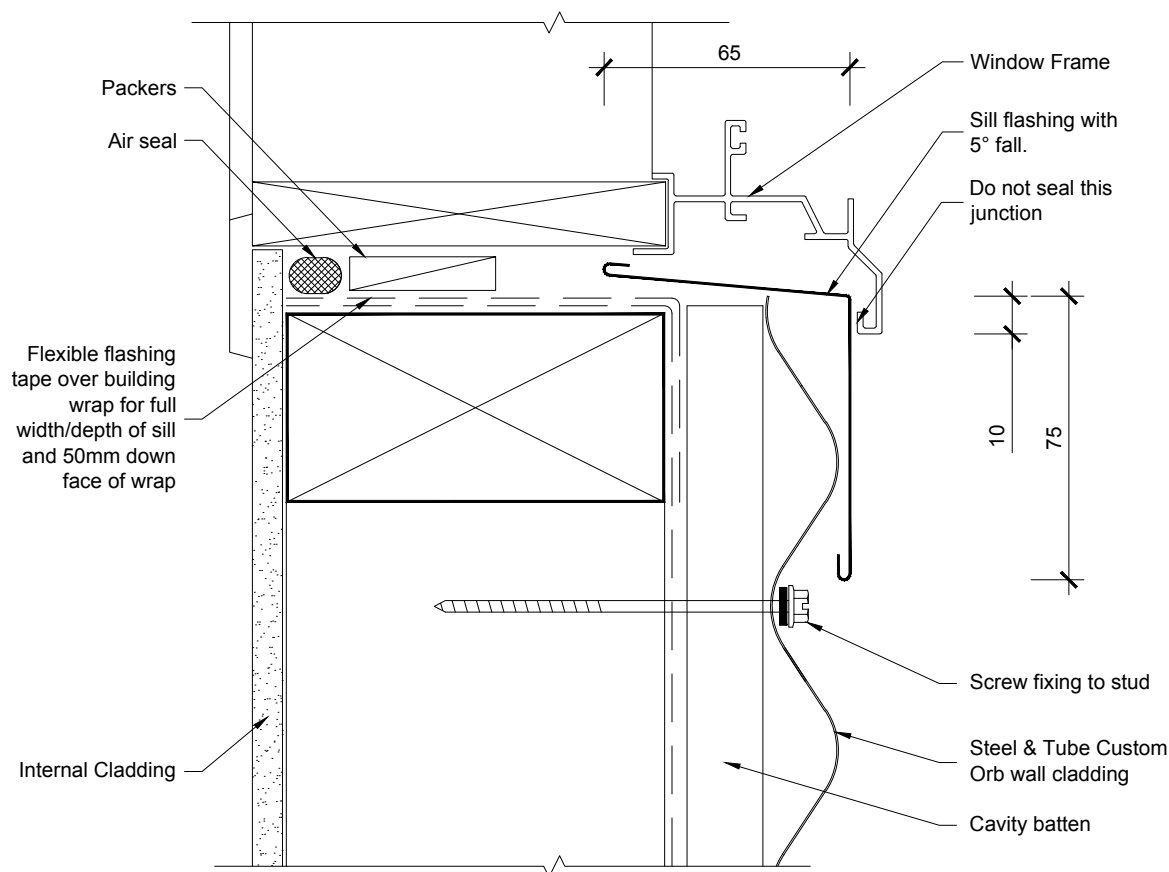
**NOTES:**

1. Cavity battens containing copper must be separated from steel cladding by building paper, building wrap, DPC/PVC strips or by painting, otherwise use uPVC Cavibat™.
2. Window profile to be selected to achieve cover shown in details.
3. Architraves are shown for consistency only, detail may be used with rebated liner.
4. Complies with E2/VM1

hcav\_custom\_orb-wind\_alum\_jamb

**Windows For Horizontal Custom Orb  
Jamb Cross Section**

All dimensions in millimetres  
Scale 1:2  
16/01/12



#### NOTES:

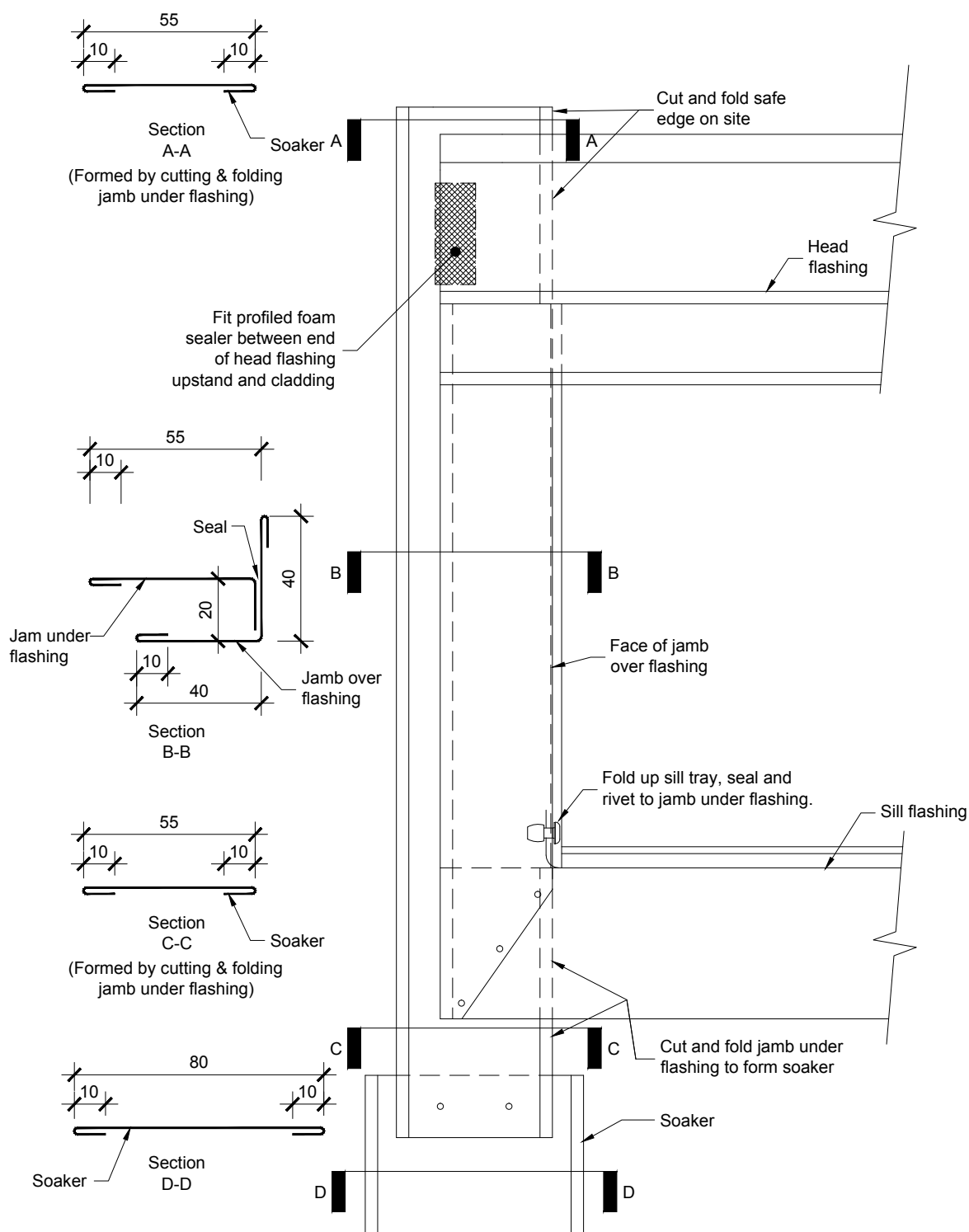
1. Cavity battens containing copper must be separated from steel cladding by building paper, building wrap, DPC/PVC strips or by painting, otherwise use uPVC Cavibat<sup>TM</sup>.
2. Window profile to be selected to achieve cover shown in details.
3. Architraves are shown for consistency only, detail may be used with rebated liner.
4. Make allowance between packer at sills for support brackets for large windows. Sash support brackets require specific design, and shall be supplied by the window manufacturer.
5. Complies with E2/VM1

hcav\_custom\_orb-wind\_alum\_sill

## Windows For Horizontal Custom Orb

### Sill Cross Section

All dimensions in millimetres  
Scale 1:2  
16/01/12



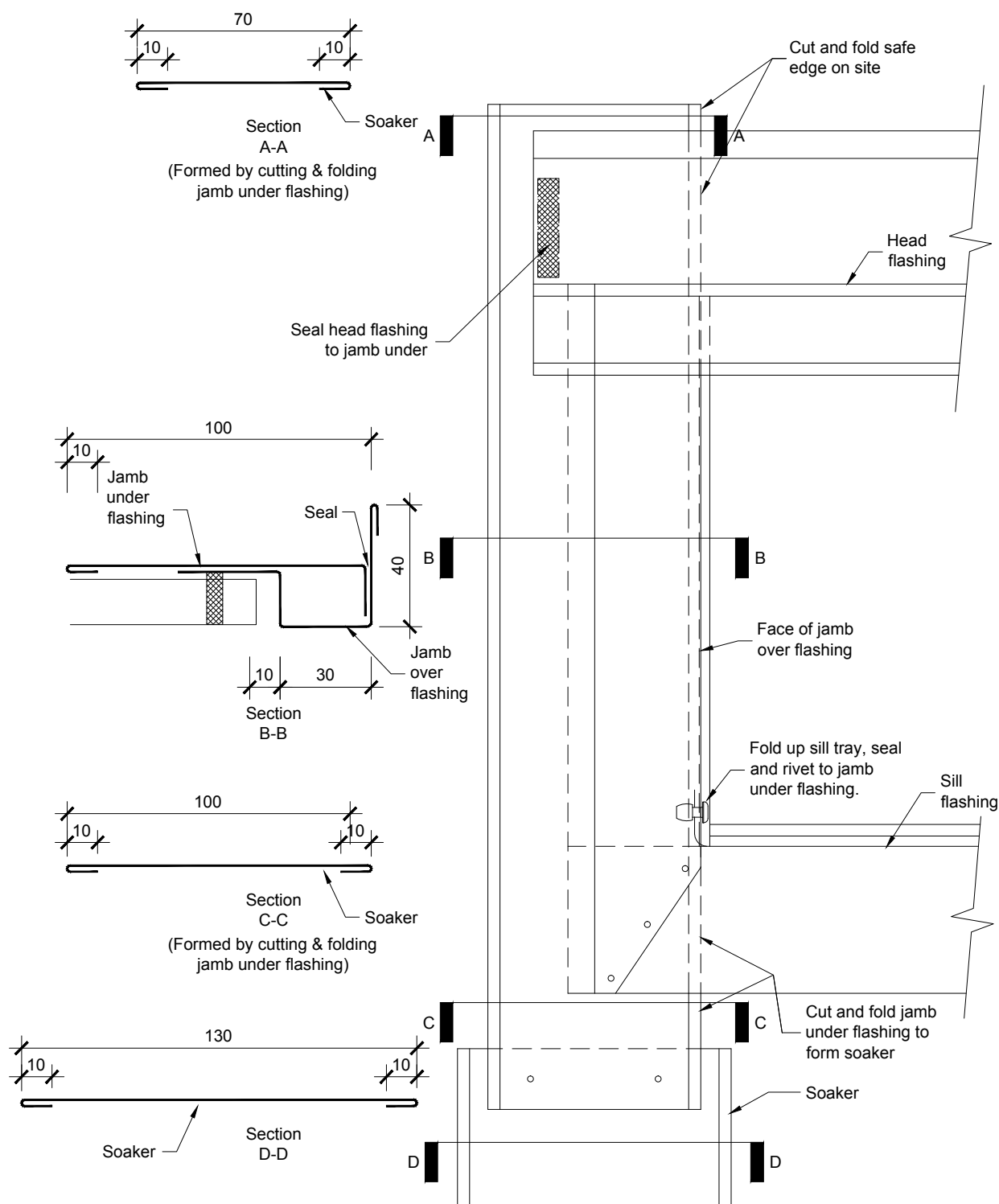
**NOTES:**

1. Tested in compliance with E2/VM1

hcav\_custom\_orb-wind\_flash\_layout1

## Windows For Horizontal Custom Orb Window Flashing Layout

All dimensions in millimetres  
Scale 1:2  
16/01/12



hcav\_custom\_orb-wind\_flash\_layout2

## Window Flashing Layout - Expressed Detail

All dimensions in millimetres  
Scale 1:2  
16/01/12