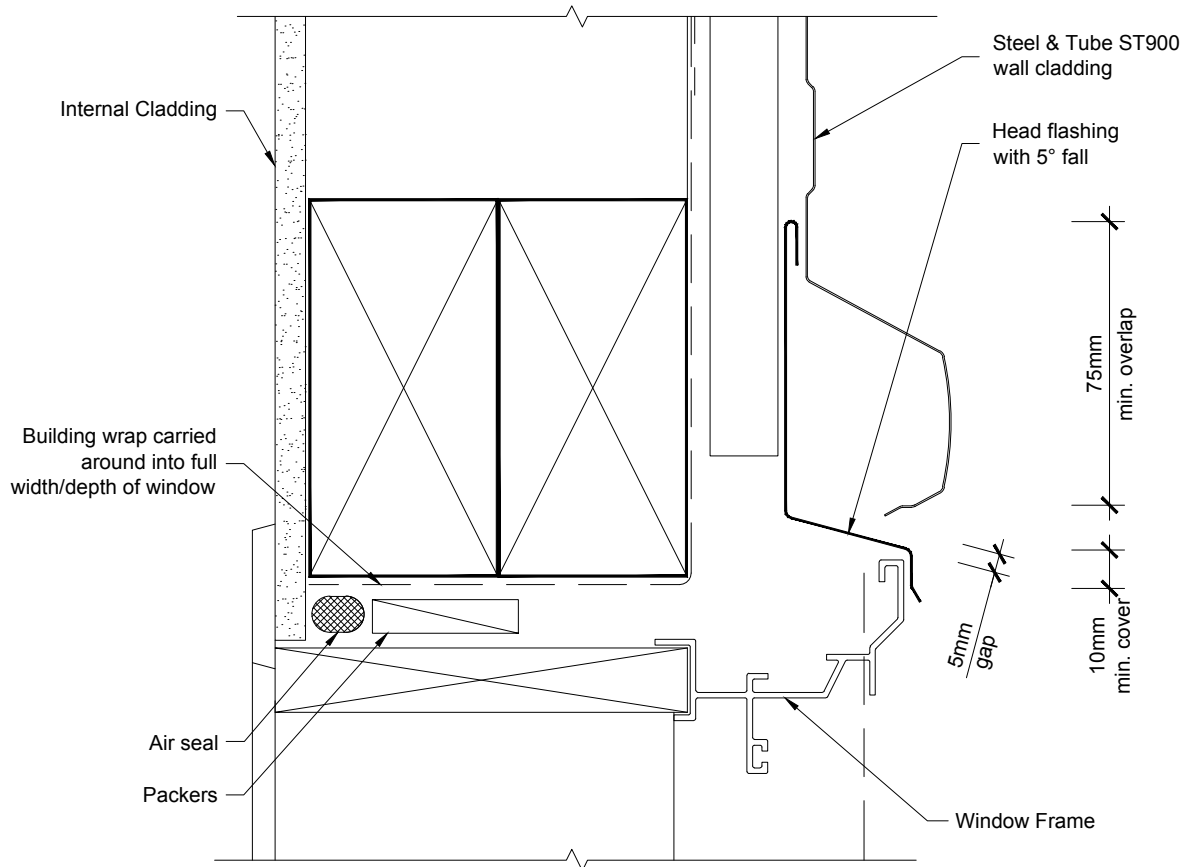


hrib_st900-wind_alum_flash

Windows For Horizontal ST 900
Window Flashing layout

All dimensions in millimetres
Scale 1:2
16/01/12



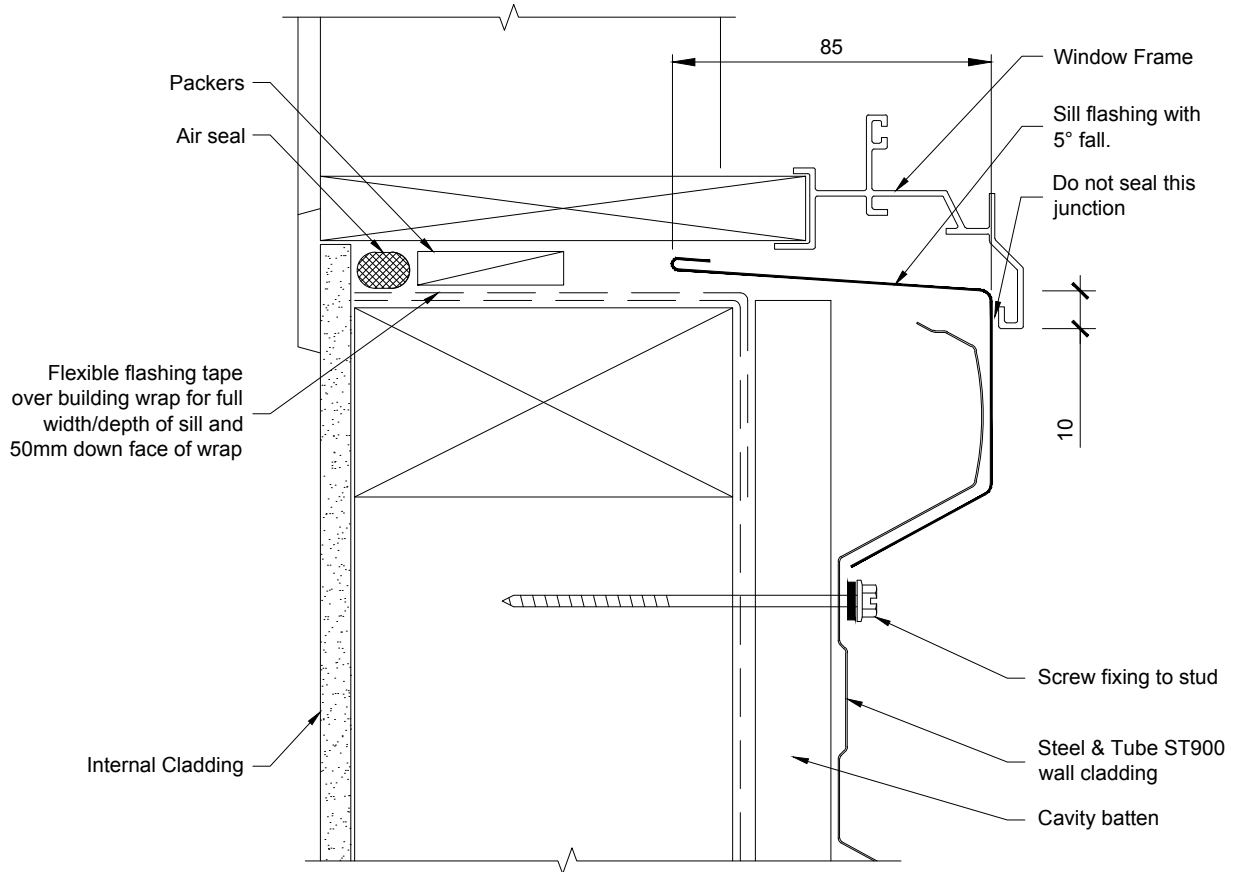
NOTES:

1. Cavity battens containing copper must be separated from steel cladding by building paper, building wrap, DPC/PVC strips or by painting, otherwise use uPVC Cavibat™.
2. Architraves are shown for consistency only, detail may be used with rebated liner.

hrib_st900-wind_alum_head

Windows For Horizontal ST 900
Head Cross Section

All dimensions in millimetres
Scale 1:2
16/01/12



NOTES:

1. Cavity battens containing copper must be separated from steel cladding by building paper, building wrap, DPC/PVC strips or by painting, otherwise use uPVC Cavibat™.
2. Window profile to be selected to achieve cover shown in details.
3. Architraves are shown for consistency only, detail may be used with rebated liner.
4. Make allowance between packer at sills for support brackets for large windows. Sash support brackets require specific design, and shall be supplied by the window manufacturer.

hrib_st900-wind_alum_sill

Windows For Horizontal ST 900
Sill Cross Section

All dimensions in millimetres
Scale 1:2
16/01/12