

# GRANEX

PRODUCT INFORMATION > STAINLESS STEEL



## RIMEX - GRANEX (BEAD BLASTED FINISH)

Granex is produced by blasting a stainless steel sheet with silicon beads to achieve a non-directional matt-silver finish.

**Sheet size:**

2500 x 1250 x 0.8mm

We offer this unique finish in three variations - fine, medium and coarse.

We can supply "medium" from Rimex Australia stocks, and can import "fine" and "coarse" from Rimex UK.

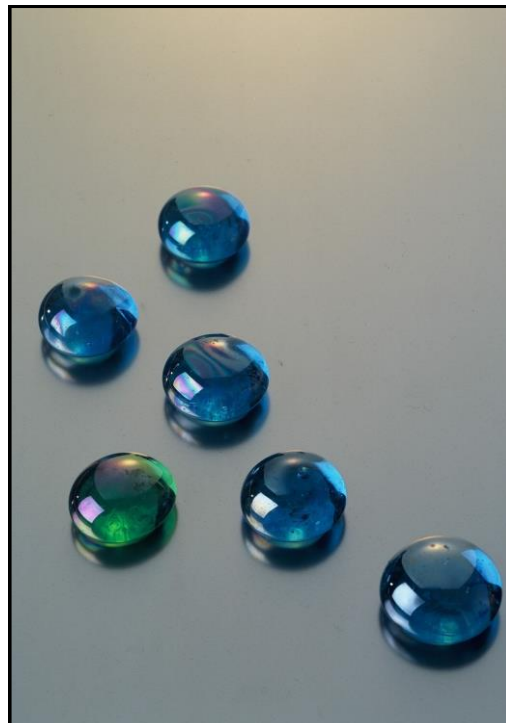
**N.B.** *Other sheet sizes, thicknesses and colours\* available on request from Rimex UK (lead time is approx. 12 - 14 weeks).*

\* See Coloured Mirrors and Satins data sheet for colour range and coloured sheet sizes.

**AUSTRALIAN STOCK**



Granex used for lift doors



Actual Finish

**CALL US TODAY**

To purchase our products **0800 426 787**  
[www.stainless.steelandtube.co.nz](http://www.stainless.steelandtube.co.nz)