



PRODUCT TECHNICAL STATEMENT

M10 WEDGE NUT

✦ Designed for ComFlor® 60 and 80 Profiles

APPLICATION

For the installation of service hangers in ComFlor® 60 and ComFlor® 80 profiles.

ADVANTAGES

Efficient Installation – Use of the M10 Wedge Nut eliminates the need for any drilling, reducing installation time.

Easy Onsite Adjustment – Allowing the contractor to retrofit services, without the requirement for further penetrations.

TESTING

Tested by an independent approved laboratory.

TECHNICAL DATA

Working Load: 2.8kN (Gravity Load)

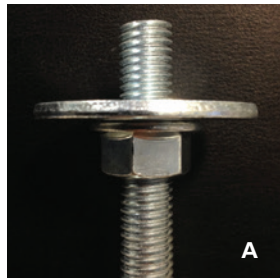
Material: Bright Leaded Free Cutting Steel
 AISI 12L14

Finish: Zinc Plated

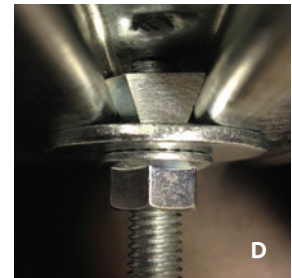
Product Codes: for ComFlor80: M10WN
 for ComFlor60: M10WN60

INSTALLATION

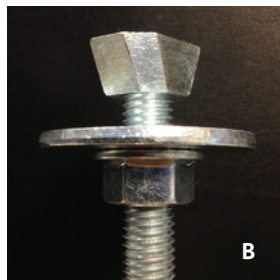
- 1 Thread the flange nut and washer on to the fixing end of the threaded rod assembly as shown in Fig A.



- 4 Begin threading the rod through the Wedge Nut until the rod meets the top of the dove tail forcing the Wedge Nut to twist and lock into position.



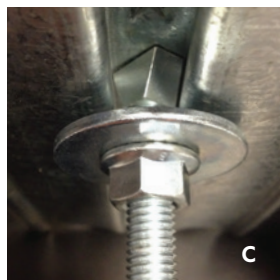
- 2 Thread the M10 Wedge Nut onto the fixing end of the threaded rod until the rod meets the reverse side of the Wedge Nut as shown in Fig B.



- 5 Once the Wedge Nut is firmly secured, thread the flange nut and washer towards the underside of the ComFlor® profile to lock the fixing in place as shown in Fig D.



- 3 Insert the Wedge Nut into the dovetail of the ComFlor® profile as shown in Fig C.



- 6 Installation is complete, Fig E.

Note:

The finished install must contain a M10 x 40 mm x 3.0mm round washer (M1040ZHW) and M10 serrated flange nut (M10ZFN) in order to comply with the tested installed method.