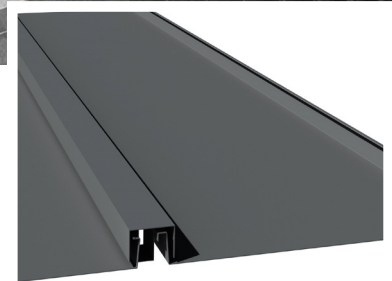
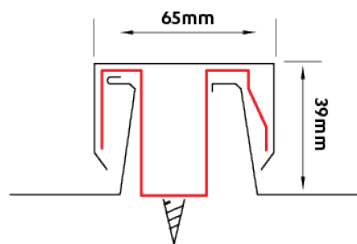
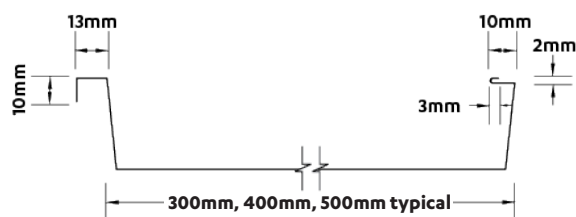


EUROLINE® BATTENLOK

PRODUCT TECHNICAL STATEMENT



Euroline® Battenlok is a direct descendant of 18th century European standing-seam roofing style. Originally crafted by skilled artisans, it has stood the test of time and to this day provides an unmistakable signature to some of the world's finest architecture.

The unique Euroline® Battenlok cap provides added boldness to the profile while also concealing the fixings. This feature gives the profile extremely clean lines and a distinct character.

DESIGN GUIDELINES

- **Minimum Pitch:** 3°
- **Effective Cover (mm):** 500mm, 400mm, 300mm
- **Applications:** Residential Roofing.
- **Available nationwide:** Manufactured in Auckland and Christchurch.
- **Materials:** Specify coating and material based on environmental conditions in accordance with NZS E2/AS1. Available in metallic coated and pre-painted steel in 0.55mm BMT (base metal thickness), and pre-painted aluminium in 0.90mm BMT.
- **Installation:** Euroline® Battenlok is laid over breather-type roofing underlay typically over 17mm ply attached to purlins at 900mm centres. Refer to Ecoply Specification and Installation Guide available from www.chhply.co.nz. Euroline® Battenlok is fastened to a plywood substrate, typically at 330mm intervals with clips and screw fasteners of materials compatible with the roofing material, and then finished into Euroline® Battenlok configuration.
- **Durability:** All material selections must be compatible with prevailing environmental conditions and adjacent materials.

NEW ZEALAND BUILDING CODE COMPLIANCE

The product will, if used in accordance with Steel & Tube's installation and maintenance requirements, assist with meeting the following provisions of the building code:

- Clause B1 Structure: Performance B1.3.3(a), B1.3.3(b), B1.3.3(g), B1.3.3(h)
- Clause B2 Durability: Performance B2.3.1(b), B2.3.1(c)
- Clause C3 Fire affecting areas beyond the fire source: Performance C3.9
- Clause E2 External moisture: Performance E2.3.1, E2.3.2
- Clause G12 Water supplies: Performance G12.3.2
- Clause F2 Hazardous building materials

To comply with the performance clause of NZBC clause E2 roof cladding to be installed in accordance with:

- Acceptable Solution NZS E2/AS1
- NZ Metal Roofing Manufacturers Code of Practice
- Steel & Tube specifications
- Steel & Tube details are available on steelandtube.co.nz

Steel & Tube Euroline® Battenlok is not subject to a warning or ban under section 26 of the New Zealand Building Act 2004.

ENVIRONMENTAL PRODUCT DECLARATION

All Steel & Tube roofing and cladding profiles are accredited with Environmental Choice and New Zealand Made when manufactured from COLORSTEEL®.

Refer to **COLORSTEEL® Environmental Product Declaration Brochure**.



MAINTENANCE

Regular maintenance is required to maximise the lifetime of metal roofing and wall cladding products. Areas not exposed to rain washing such as soffits, wall cladding under eaves, undersides of gutters, fascias, sheltered areas such as garage doors will require programmed maintenance.

Refer to **New Zealand Steel Maintenance Recommendations Bulletin & Environmental Categories, Warranty & Product Maintenance Recommendations Brochure**.

When access to the roof is necessary after construction, it is best practice to place foot in the pan of the profile when walking up the roof and follow purlin lines when traversing roofs. If ribs are too close together, so workers cannot place their feet in the pan, their weight must be spread evenly over at least two ribs when walking up the roof.

FASTENERS

Euroline® Battenlok is fastened to a plywood substrate typically at 330mm intervals with either Zinalume¹ or Stainless Steel² clips and fasteners (see Fixings below) of materials compatible with the roofing material.

The durability of fasteners should equal or exceed that of the material being fastened, and the fastener metal or coating must be compatible with the cladding material if in contact. Refer to NZS E2/AS1 Table 20.

STEEL AND ALUMINIUM ROOFING & WALL CLADDING COMMON FIXINGS³

SUBSTRATE	ROOFING & WALL CLADDING MATERIAL	
	STEEL	ALUMINIUM
Timber	12g x 25mm T17	12g x 25mm 304 stainless steel T17

1 Zinalume Clip - Metallic coated and pre-painted steel cladding.

2 Stainless Steel Clip - Aluminium cladding.

3 In a Category 5 environment, a Class 5 fixing is recommended.

SPECIFICATIONS

Recommended specifications are available in the branded sections of Masterspec, SMARTSPEC or from your local Steel & Tube branch or visit steelandtube.co.nz

DESIGN DETAILS

Design details covering many applications are available on steelandtube.co.nz in .DWG, .PDF and .RVT under each product section.

THERMAL NOISE

All profiled metal roofs and wall cladding will exhibit thermal roof noise at times. Thermal roof noise is caused by the roof expanding or contracting due to temperature fluctuation and darker colours may increase thermal noise, this is covered in the NZMRM Code of Practice.

As stated in the **MBIE document - Guide to tolerances, materials and workmanship in new residential construction 2015**, "Noise from the thermal expansion of the metal roofing is normal and should be expected."

OIL CANNING

Oil canning or undulations in the pan is an architectural feature that may occur in flat areas of metal claddings. However, this feature does not affect the strength or performance of the cladding. Oil canning may occur during its roll-forming process and/or installation stage and during the product's thermal expansion.

IMPORTANT PUBLICATIONS

For your installation to perform to its potential, it is essential that it is designed, installed and maintained in accordance with good trade practice. For further information, please refer to:

- NZS E2/AS1
- BRANZ: Good Profiled Metal Roofing Practice
- MBIE - Guide to tolerances, materials and workmanship in new residential construction 2015
- NZMRM: New Zealand Metal Roofing and Wall Cladding Code of Practice

- NZMRM: Installation Guide – Metal Long Run Roofing and Cladding
- RANZ: How To Guides
- Steel & Tube Roofing Solutions Product Guide
- New Zealand Steel: Installers Guide
- New Zealand Steel: Maintenance Recommendations Bulletin
- New Zealand Steel: Environmental Categories, Warranty & Product Maintenance Recommendations Brochure

INSTALLERS

A list of local installers for your area and contract type is available from your local Steel & Tube branch or visit

steelandtube.co.nz/installer

TRADEMARK NOTE

Trademarks apply to the following products presented in this publication: Euroline, COLORSTEEL, Masterspec and SMARTSPEC.

CALL US TODAY

To purchase our products: **0800 427 663**

Sales email: **sales@steelandtube.co.nz**

Technical helpline: **0800 333 247**

Technical email: **roofing@steelandtube.co.nz**

Steel & Tube Holdings Limited

7 Bruce Roderick Drive, East Tamaki, Auckland 2013

NZBN: 9429040949390

steelandtube.co.nz

Disclaimer: This data should be used as a guide only, for exact applications, engage the services of a qualified engineer.