

GATE FASTENERS

F1201

JP GATE FASTENER WITH
CHAIN AND STAPLE



F1201

F1203

LP GATE FASTENER WITH
CHAIN AND STAPLE
(SPRING RING)



F1203

F1207

LP GATE FASTENER WITH
HEAVY CHAIN (1M LONG)



F1207

F1210

SHEEPYARD HOOK
AND STAPLE



F1210

F1213

JP/LP SPARE STAPLE



F1212

STOCKYARD FASTENER
WITH STAPLE



F1212



The Hurricane range includes:

- › Gates
- › Gate Fittings
- › Fencing Wire
- › Fence Posts
- › Deer Fence
- › Home Fence
- › School Fence
- › Security Fence
- › Chain Link
- › Staples & Barbed Wire

To find out more about our extensive Steel & Tube range of products and services:

- | | |
|---------------------------|-------------------------------|
| › Steel | › Rural Products |
| › Pipe, Fittings & Valves | › Industrial Products |
| › Stainless Steel | › Reinforcing |
| › Fastenings | › Roofing, Cladding, |
| › Chain & Rigging | › Rainwater Systems & Purlins |

CONTACT US TODAY:

0800 478 335

www.steelandtube.co.nz



STRONGER IN EVERYWAY



PRODUCT GUIDE

GATE FITTINGS



PRODUCT GUIDE › GATE FITTINGS

MAY 2014

RURAL & FENCING



S&T173

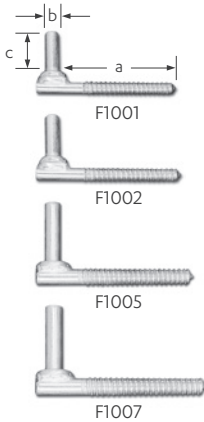


For over 80 years Hurricane has provided a range of high quality, hard wearing products made to last in New Zealand's harsh environment.



SCREW GUDGEON

| | A | B | C |
|-----------------|-----|----|----|
| F1001 | 100 | 12 | 40 |
| F1002 | 105 | 16 | 32 |
| F1003 | 140 | 16 | 42 |
| F1004 Short Pin | 150 | 20 | 50 |
| F1005 Long Pin | 150 | 20 | 70 |
| F1007 Long Pin | 200 | 20 | 70 |



DRIVE GUDGEON

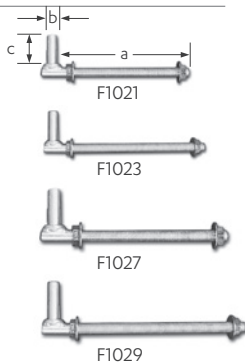
| | A | B | C |
|--------|-----|----|----|
| F1013* | 200 | 20 | 70 |



*Barbed

THRU POST GUDGEON

| | A | B | C |
|---------|-----|----|----|
| F1021 | 190 | 12 | 40 |
| F1023 | 250 | 16 | 40 |
| F1026* | 275 | 20 | 50 |
| F1027** | 275 | 20 | 70 |
| F1029** | 350 | 20 | 70 |
| F1031** | 425 | 20 | 70 |

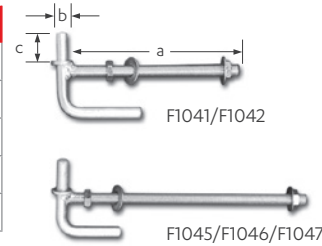


*Short Pin

**Long Pin

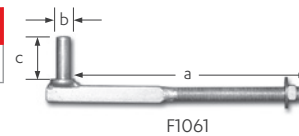
LOCK THRU POST GUDGEON

| | A | B | C |
|-------|-----|----|----|
| F1041 | 200 | 16 | 42 |
| F1042 | 250 | 16 | 42 |
| F1045 | 275 | 20 | 52 |
| F1046 | 350 | 20 | 52 |
| F1047 | 425 | 20 | 52 |



SQUARE SHANK GUDGEON

| | A | B | C |
|-------|-----|----|----|
| F1061 | 275 | 20 | 50 |



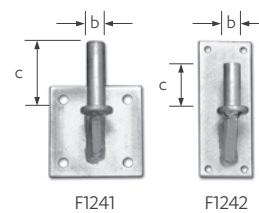
WELD ON SOCKET AND GUDGEONS

| | B | C |
|-------|----|----|
| F1081 | 16 | 40 |
| F1084 | 20 | 40 |
| F1091 | 16 | 40 |
| F1092 | 20 | 70 |



WELD ON PLATE GUDGEON

| | B | C |
|-------|----|----|
| F1241 | 20 | 70 |
| F1242 | 16 | 40 |



DRAWBOLT

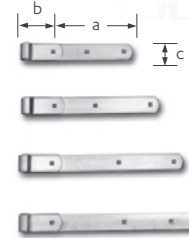
F1231 BOLT



HINGE STRAP

STANDARD

| | A | B | C |
|-------|-----|----|----|
| F1123 | 150 | 16 | 30 |
| F1124 | 225 | 16 | 40 |
| F1125 | 300 | 16 | 40 |



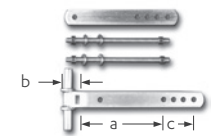
HEAVY DUTY

| | A | B | C |
|-------|-----|----|----|
| F1131 | 300 | 20 | 50 |
| F1132 | 375 | 20 | 50 |
| F1133 | 450 | 20 | 50 |



CONCRETE POST SET

| | A-C | B |
|-------|---------|----|
| F1180 | 125-200 | 50 |



- One size fits all bolts around the concrete post
- Suitable for both top and bottom gudgeons
- Two way to offset the gates to the posts

F1180

ADJUSTABLE GATE CLAMP

LITE CLAMP

| | A | B | C |
|-------|----|----|----|
| F1224 | 20 | 16 | 50 |
| F1225 | 25 | 20 | 50 |
| F1229 | 25 | 20 | 50 |



HEAVY DUTY

| | A | B | C |
|-------|----|----|----|
| F1230 | 25 | 20 | 50 |