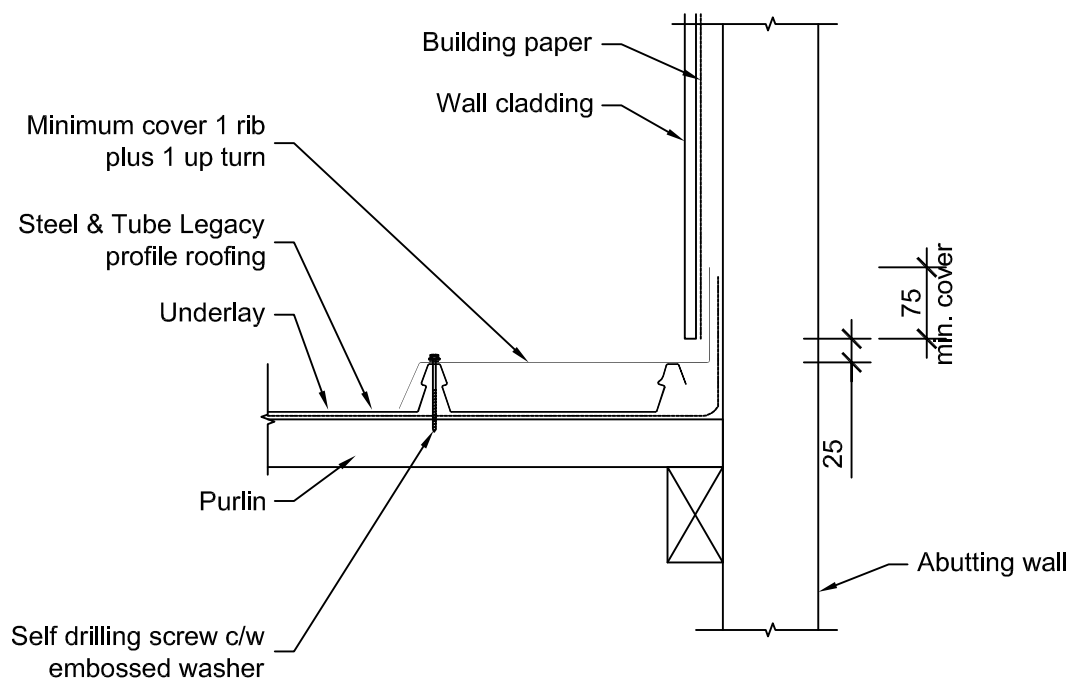


LOW / MEDIUM / HIGH WIND ZONES WHERE PITCH $\geq 10^\circ$



VERY HIGH / EXTREME HIGH WIND ZONES WHERE PITCH $= 10^\circ$
ALL WIND ZONES WHERE PITCH $< 10^\circ$

Legacy Side Flashing to Parallel wall (Abutment Flashing) - One Piece